

304500

305000

305500

306000

306500

307000

601000

600500

600000

599500

599000

598500

598000

597500

601000

600500

600000

599500

599000

598500

598000

597500

304500

305000

305500

306000

306500

307000



KEY

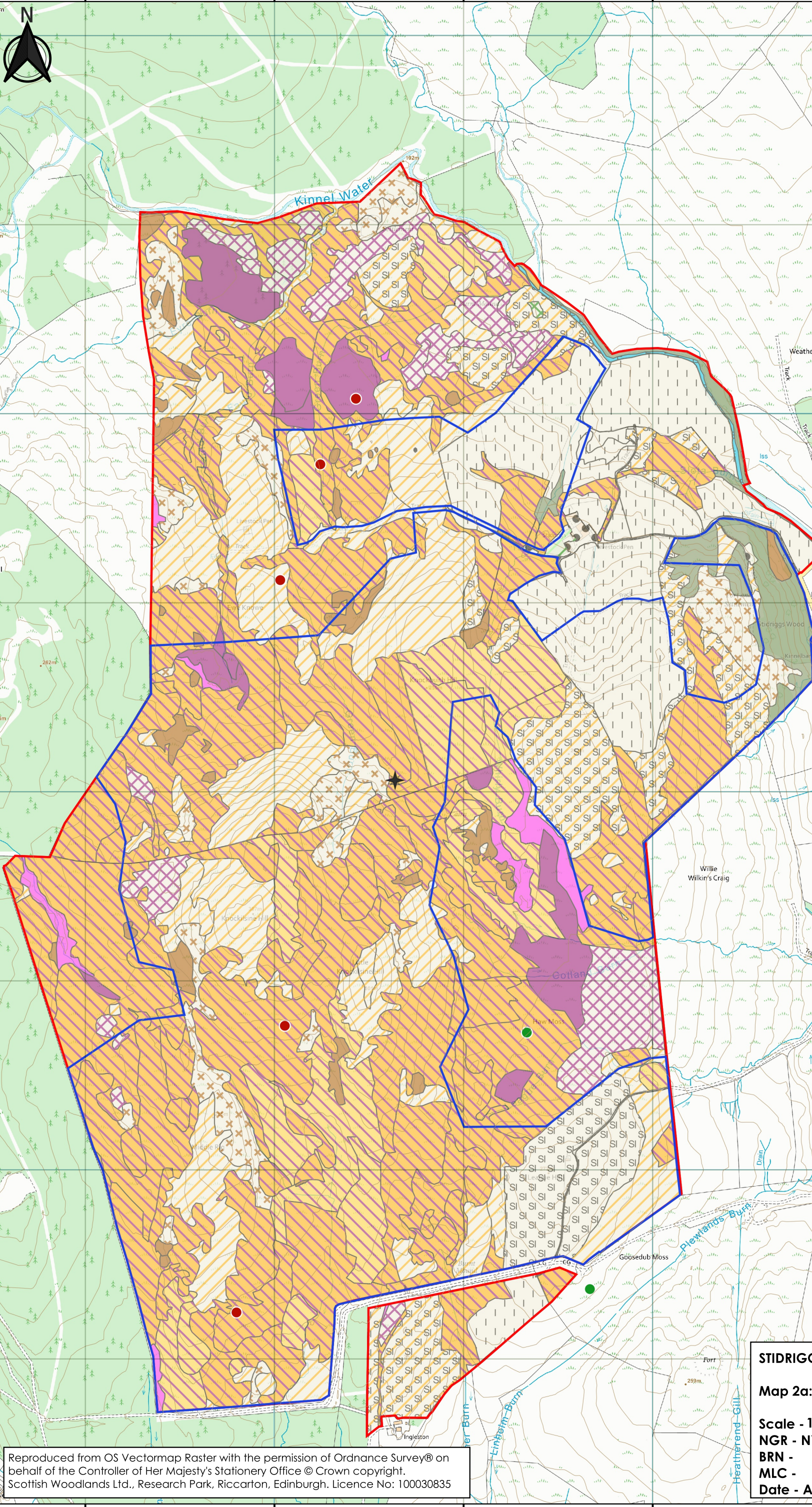
- ★ Grid reference point
- ▭ Site boundary
- ▭ Woodland creation boundary

Ecology constraints

- Curlew
- Snipe

Habitats

- A1.1.1 - Broadleaved woodland - semi-natural
- A1.1.2 - Broadleaved woodland - plantation
- A1.2.2 - Coniferous woodland - plantation
- A1.3.2 - Mixed woodland - plantation
- A2.1 - Scrub - dense/continuous
- B1.1 - Acid grassland - unimproved
- B1.2 - Acid grassland - semi-improved
- B3.1 - Calcareous grassland - unimproved
- B4 - Improved grassland
- B5 - Marsh/marshy grassland
- B6 - Poor semi-improved grassland
- C1.1 - Bracken - continuous
- C1.2 - Bracken - scattered
- D2 - Wet dwarf shrub heath
- E1.6.1 - Blanket sphagnum bog
- E1.7 - Wet modified bog
- E1.8 - Dry modified bog
- E2.1 - Flush and spring - acid/neutral flush
- G1.1 - Standing water - eutrophic
- J4 - Bare ground



STIDRIGGS FARM

Map 2a: Habitats and Birds

Scale - 1:10,000 @ A3

NGR - NY 093 990

BRN -

MLC -

Date - Apr 2026

Reproduced from OS Vectormap Raster with the permission of Ordnance Survey® on behalf of the Controller of Her Majesty's Stationery Office © Crown copyright. Scottish Woodlands Ltd., Research Park, Riccarton, Edinburgh. Licence No: 100030835