

# Harvesting and Marketing

[www.scottishwoodlands.co.uk](http://www.scottishwoodlands.co.uk)



Timber Harvesting and Marketing is at  
the core of our business.

Growing a Sustainable Future



# Scottish Woodlands Ltd harvests over one million tonnes of timber every year.

We have the knowledge and expertise to undertake work at any scale and at any location, supplying all of the major UK and export markets.

Scottish Woodlands' harvesting team is involved in all fields of timber harvesting and marketing activity. From farm woodland thinning to large-scale clear fells, within the constraints of each site, our aim is always to optimise volume recovery and crop value.

From the company's cooperative origins, we have successfully grown to be one of the largest suppliers of private sector timber in the UK, having built strong relationships with all of the domestic wood users. We take pride in our thoroughly independent approach to timber marketing that ensures growers' interests are put first.

Working closely with colleagues across the company, we can offer clients a comprehensive range of forestry and estate services of the highest professional standards to complement our harvesting services.

Scottish Woodlands operates with an independently accredited management system which controls performance on quality, environment, health and safety and social responsibility aspects. The company was a founder member of the Forest Industry Safety Accord (FISA) which makes a commitment to health, safety and welfare across the industry.

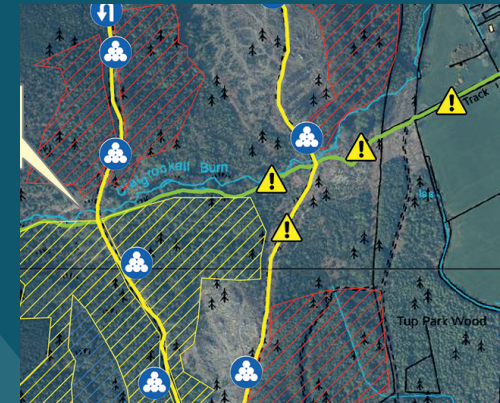
In addition, the company holds dual certification Group and Resource Manager Scheme status with both FSC® and PEFC™. This allows us to certify clients' woodlands to internationally recognised standards for responsible forest management, in line with the UK Woodland Assurance Standard / UK Forest Standard.

**Certified timber benefits from enhanced market access and generally higher prices.**



## Contract Management

- Competent and Approved Contractors
- Health and Safety Planning and Compliance
- Operational Management and Supervision
- Quality Assurance Throughout the Supply Chain



## Operational Planning

- Felling Approval
- Timber Measurement and Assessment
- Production Planning and Forecasting
- Hazard Identification and Mitigation
- Harvesting System Selection
- Timing
- Liaising with Appropriate Stakeholders



## Harvesting

- Environmental Awareness
- Contractor selection
- Suitable machinery
- Appropriate machinery selection and harvesting methodology
- Innovative Steep Ground Working Solutions
- Whole Tree Chipping /Biomass Recovery
- Productivity



## Logistics

- Innovative Solutions – Road, Rail, Sea
- Use of Alternative Logistics Systems to Reduce Road Haulage and CO2 Emissions
- Route Planning and Assessment
- Appropriate Truck Configuration
- Vehicle Tracking



## Marketing

- Bespoke Marketing Solutions to Meet Client's Objectives
- Comprehensive Market Access
- Strategic Approach
- Extensive Market Intelligence
- Maximise Financial Returns through Product / Market Optimisation



## Environmental and Social

- Pollution Control
- Habitat Protection
- Public Access Awareness
- Ecological Surveys





Our offices are located in the main timber producing areas across the UK to provide operations based on local knowledge, while supported by corporate services working across the company to ensure a consistent service is offered to clients.

## Services:

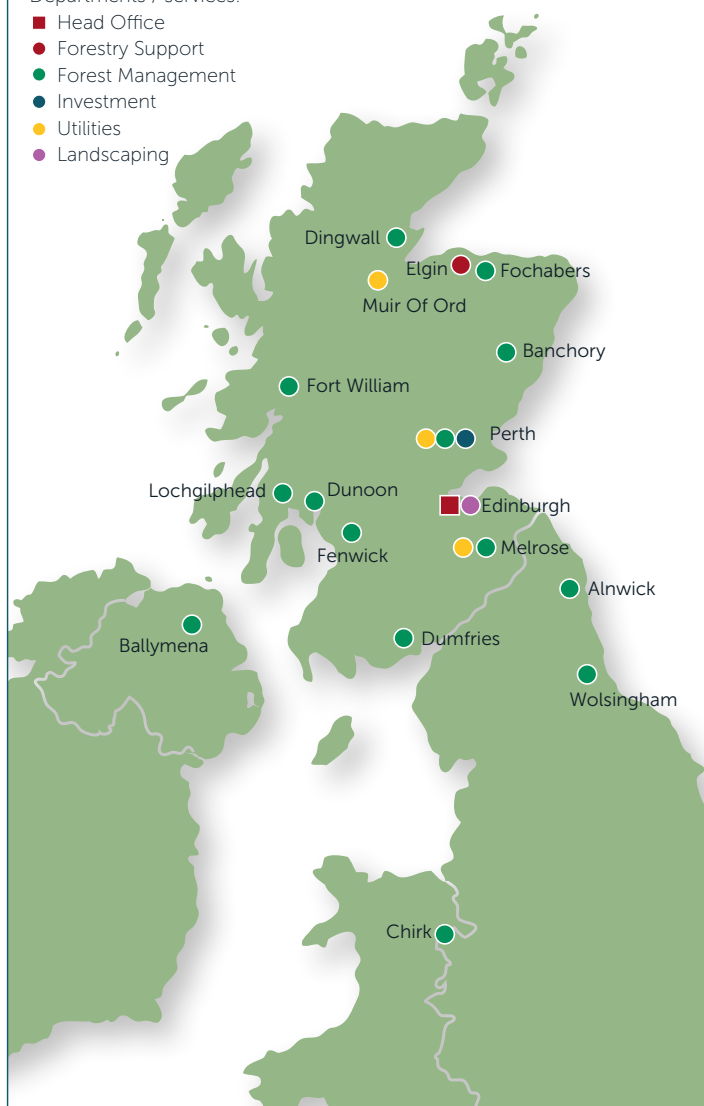
- Forest / Estate Management and Contracting
- Timber Harvesting and Marketing
- Forestry Investment and Property Acquisition
- Utilities and Railways - Vegetation Management, Fencing and Minor Civils
- Landscaping, Arboriculture and Grounds Contracting
- Forest Certification
- Digital Mapping
- Woodland Insurance



## Current offices

Departments / services:

- Head Office
- Forestry Support
- Forest Management
- Investment
- Utilities
- Landscaping



Please contact us for further information:



## Head Office:

Research Park, Riccarton, Edinburgh EH14 4AP  
T: 0131 451 5154  
E: [enquiries@scottishwoodlands.co.uk](mailto:enquiries@scottishwoodlands.co.uk)

