

ERICSTANE FARM WOODLAND CREATION PROPOSALS NORTH & SOUTH

- The Borders Forest Trust are developing proposals for woodland creation on Ericstane North
- Scottish Woodlands Ltd., on behalf of the landowners, are developing woodland creation proposals on Ericstane South
- Both sites are at Ericstane Farm, near Moffat

Context

The **Scottish Government** supports woodland creation as a vital part of future land use in Scotland.

This will contribute to:

- Fulfil targets on **Climate Change** (carbon sequestration – 18,000 ha of new woodland per annum by 2024/25)
- Fulfil targets on **Biodiversity**
- Help underpin a **Sustainable Supply of Wood Products** to the Scottish forestry industry
- The UK **imports** over 70% of its timber needs
- Roughly **18%** of Scotland is wooded
- In terms of the **Scottish Borders Forestry and Woodland Strategy**, the locality is classified as being either ‘potential’ for a range of woodland types

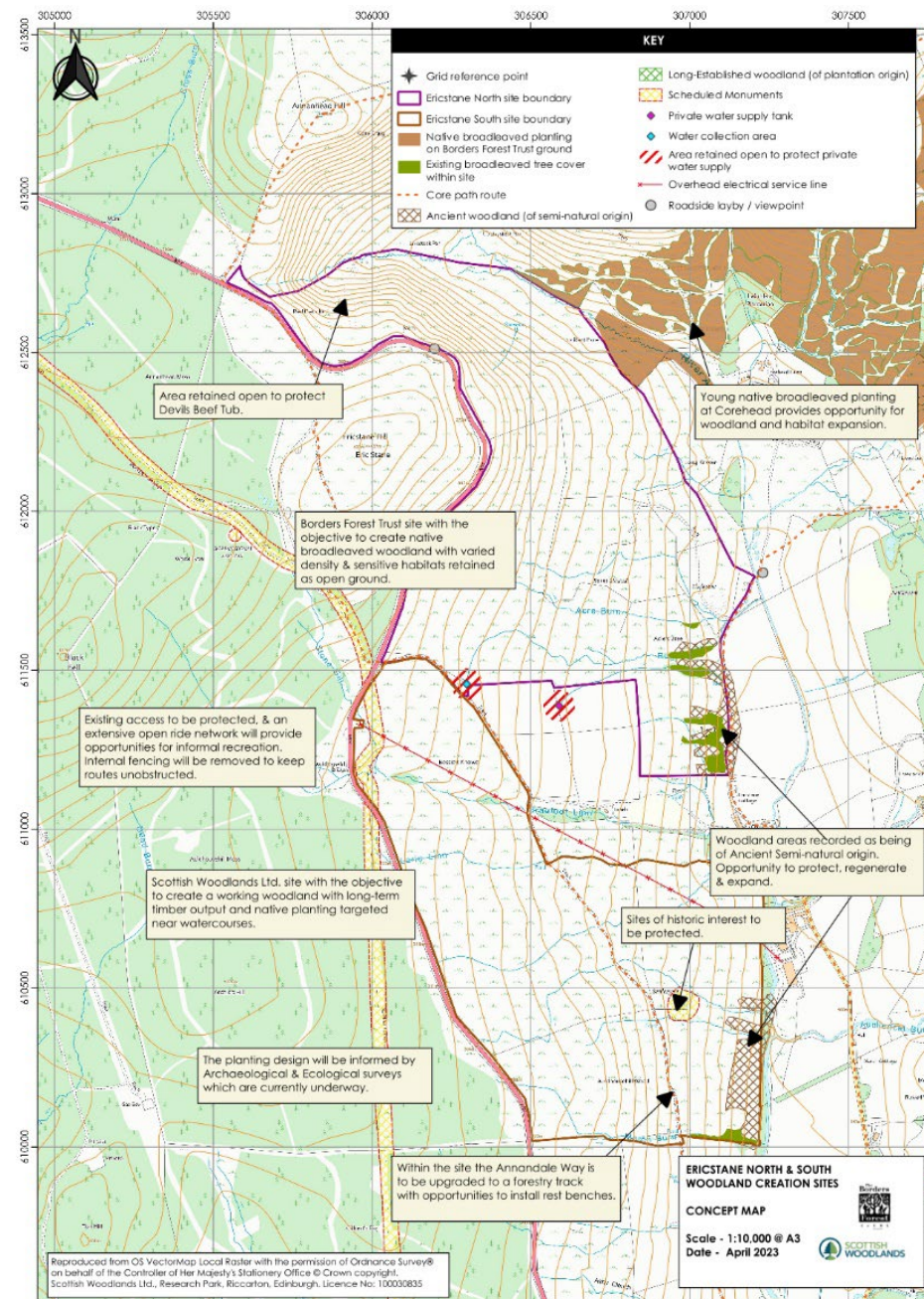
Context

The woodland creation proposals cover ground both in the north and south of Ericstane, with an area in the middle retained in agricultural use.

The two sections are stand-alone projects for different land owners and have differing objectives. At the same time the two projects are viewed together in terms of landscape and habitat creation.

The owners are working together where it is sensible to do so, for example the archaeological, ecological and soil surveys cover both north and south in order to give an holistic appraisal of the area.

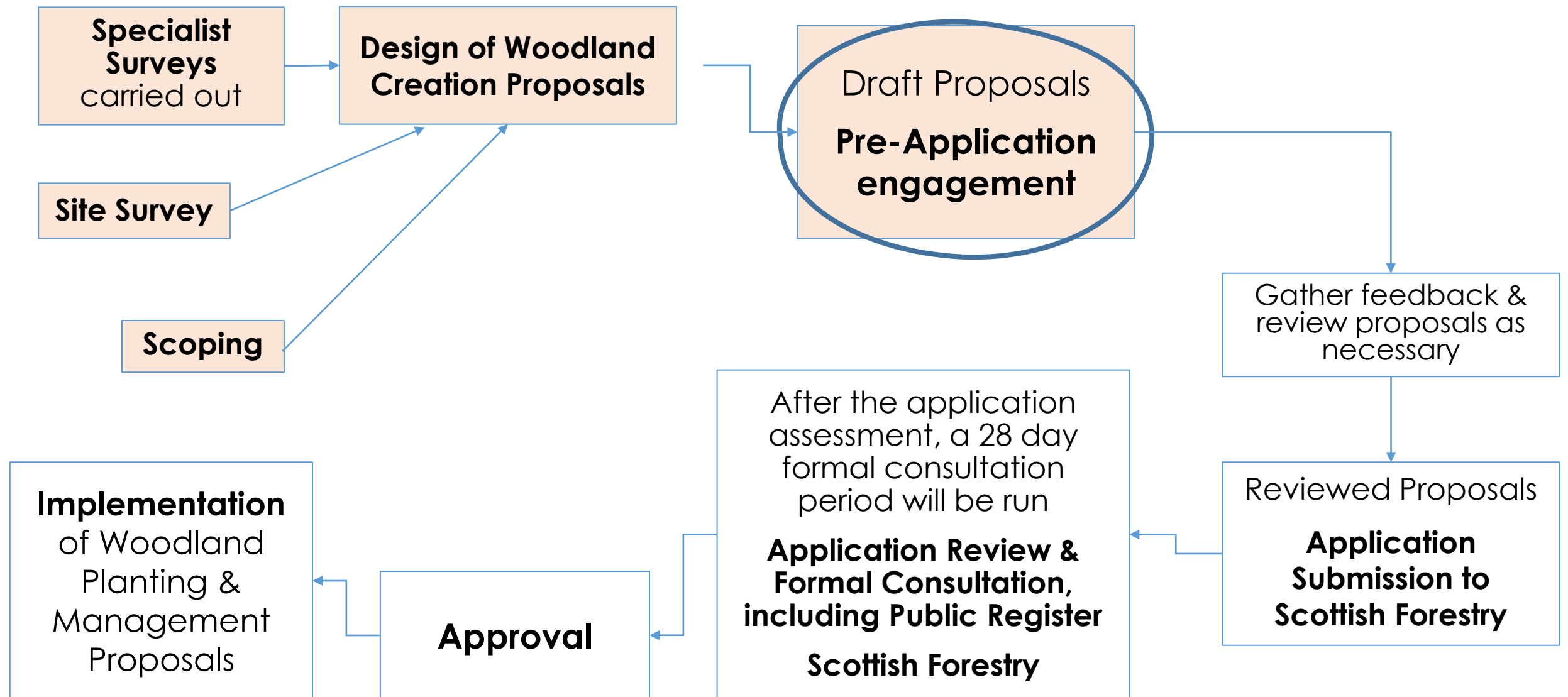
Context



Objectives

Ericstane North	Ericstane South
<ul style="list-style-type: none">• Habitat restoration to create healthy ecosystems to benefit both wildlife and people	<ul style="list-style-type: none">• Timber production
<ul style="list-style-type: none">• Woodland creation to grow the Wild Heart of Southern Scotland	<ul style="list-style-type: none">• Carbon sequestration
<ul style="list-style-type: none">• Eradication of invasive non-native species	<ul style="list-style-type: none">• Protecting and enhancing existing biodiversity values
<ul style="list-style-type: none">• To complement recent planting at Corehead and unite all parts of the Devils Beef Tub under one management plan	<ul style="list-style-type: none">• Creating an attractive woodland which protects and enhances existing recreational routes
<ul style="list-style-type: none">• Carbon sequestration	<ul style="list-style-type: none">• Protecting cultural heritage features

Design & Application Process



Design Process

The design process has included specialist survey and assessment of:

- **Habitats, Birds and Animals**

- Full Habitats, Birds and Protected Species surveys have been carried out by a specialist Ecologist
- Any habitats of identified regional and local interest will be protected and retained in open ground
- New habitats will be created, notably through establishment of new native and riparian woodlands and the removal of grazing on open areas within the woodland

- **Soils and Peat**

- A full soils survey has been undertaken, with areas of deep peat recorded (peat with a depth of 50cm or more is classed as deep peat and will be left undisturbed)
- Detail on soils allows more accurate tree species selection
- No ploughing is proposed as part of this application

Design Process

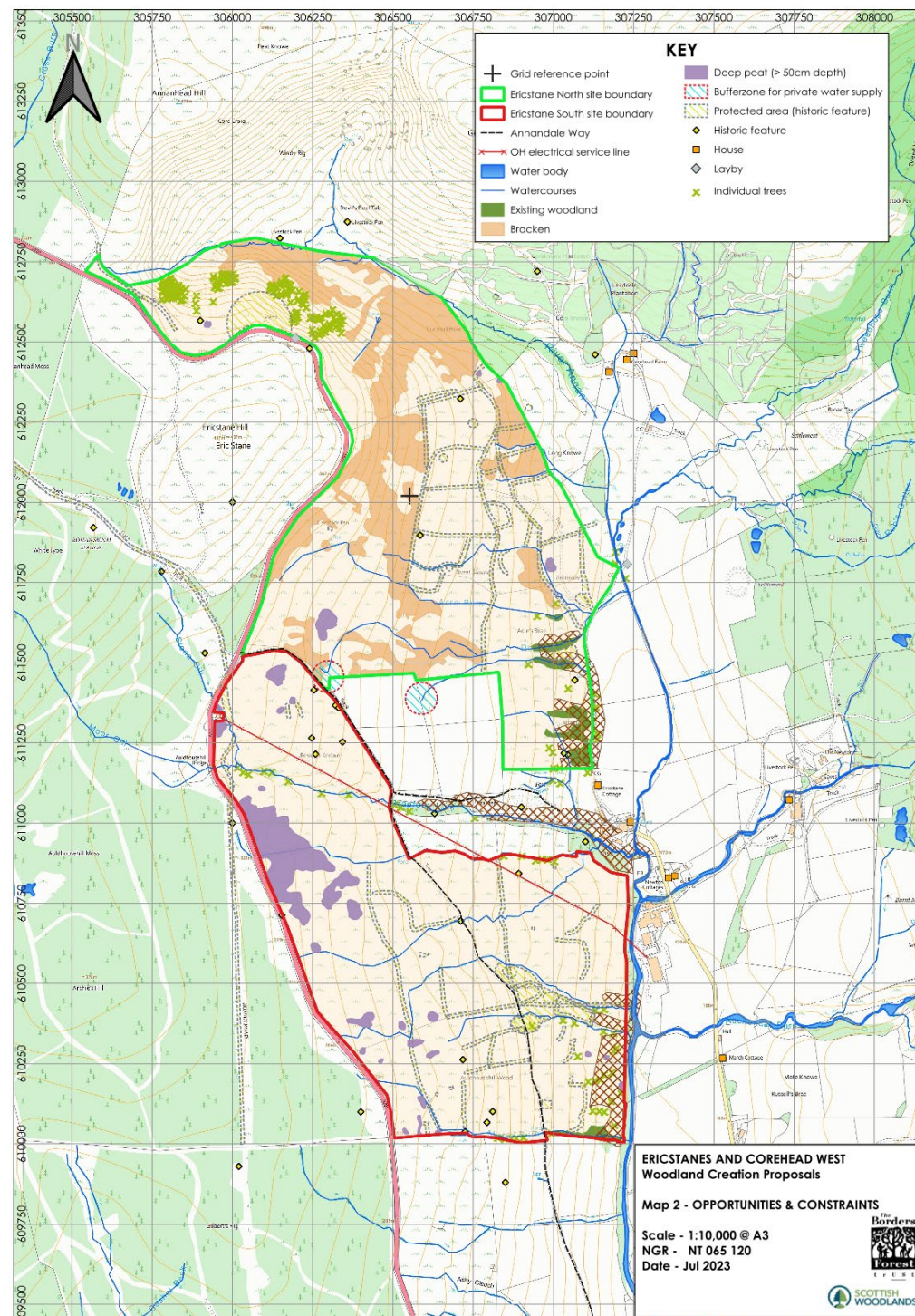
- **Archaeology**

- All identified features of interest will be protected as recommended by the independent specialist report
- The sites include two scheduled monuments, the route of a Roman road and an enclosed settlement with a building platform. These and other identified features will be protected and retained in open ground

- **Landscape**

- The northern section of the farm includes the famous 'Devils Beef Tub', which will not be planted as part of these proposals
- The woodland has been designed to fit with the local topography and to include a range of diverse conifers, mixed woodland, native woodland and open ground

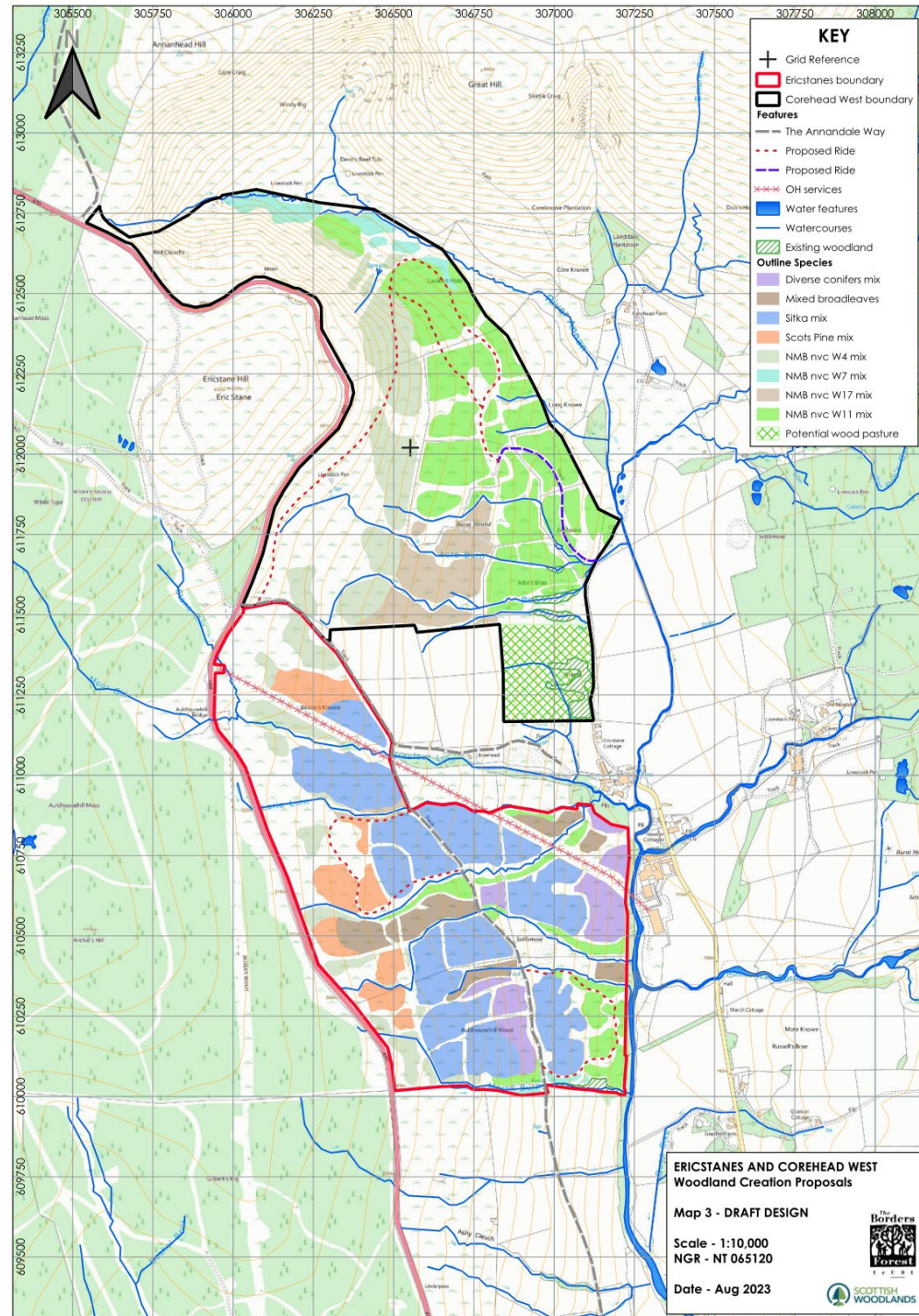
Opportunities & Constraints



Design Considerations

Ericstane North	Ericstane South
<ul style="list-style-type: none">• No planting within 50m of private water supply intakes	<ul style="list-style-type: none">• No planting within 50m of private water supply intakes
<ul style="list-style-type: none">• The Devils Beef Tub will be left free from new planting	<ul style="list-style-type: none">• Planting held back from the A701
<ul style="list-style-type: none">• Sensitive habitats and archaeological features will be protected	<ul style="list-style-type: none">• Sensitive habitats and archaeological features will be protected
<ul style="list-style-type: none">• Native broadleaved planting with Scots pine to fit with ground conditions and to complement recent planting at Corehead	<ul style="list-style-type: none">• A mixture of woodland types, with coniferous woodland in suitable locations and native broadleaves focused near existing broadleaved tree groups and watercourses
<ul style="list-style-type: none">• New access routes will allow walking in the woodland and open ground	<ul style="list-style-type: none">• The route of the Annandale Way will be upgraded to a forest road

Draft Design



Draft Area Summary

Ericstane North	Ericstane South
Total planted area	Total planted area
Existing woodland	Existing woodland
Open ground	Open ground
Broadleaved planting	Broadleaved planting
Coniferous planting (Scots Pine)	Coniferous planting

Other Information

- **Protection**

- The planting in the north will not be enclosed by a deer fence while the southern section will be.

- **Access**

- The Annandale Way will be retained and re-surfaced with self-closing gates allowing access
- New routes will also be created through the planting groups
- Timber haulage will utilize the A701

- **Timing**

- If approval is granted by Scottish Forestry, woodland establishment works would be likely to be undertaken in winter 2024/25

- **Employment**

- There will be a net increase in employment

- **Landscape**

- Visual representations of the future woodland has been created and made available to view

Scoping and Consultation

Scoping

- Scoping has been undertaken with a range of stakeholders e.g. Dumfries & Galloway Council, SEPA, Historic Environment Scotland, RSPB, SGRPID (agriculture department), Scottish Water

Consultation

- Consultation is being undertaken with the wider public

Public Register

- Once the proposals are developed further an application will be submitted to Scottish Forestry
- When Scottish Forestry are content with the application, then details will be placed on the Public Register and further consultation will be undertaken by Scottish Forestry

How to Comment

Your questions, comments and feedback on the proposals are welcome.

You can fill-in a feedback form and send it to Walker Hines Woodland Services at the address below

The feedback form is also available on paper, see below.

Please also get in touch should you wish further information.

**Walker Hines Woodland Services, 8 Kirkton Avenue, Bathgate,
West Lothian, EH48 1EN**

Email: mail@walkerhineswoodlandservices.co.uk

A note of all comments received will be passed on to Scottish Forestry, along with details of any design amendments proposed.

If you wish to copy Scottish Forestry into your correspondence, their contact details are:

**Scottish Forestry, South Scotland Conservancy, 55/57 Moffat Road,
Dumfries DG1 1NP (southscotland.cons@forestry.gov.scot)**

