

Ericstane North & South Woodland Creation

**Analysis of key viewpoints using
Map Maker Prospect**

Viewpoints

Following on from initial landscape and viewpoint analysis, four key viewpoints (1-4) were identified to be representative of commonly available views, or views onto the more visually sensitive parts of the site. In addition two more views (5 & 6) have been included along the Old Edinburgh Road to represent views from more locally significant positions.

The Map Maker Prospect programme was then used to generate various computer images of the proposed woodland as seen from the identified viewpoints.

For each of the viewpoints, plan and perspective images have been generated using digital design information. The plans show the location of the viewpoint, the breadth of view used in the perspective, and the footprint of the design of the proposed woodland at Ericstane North & South.

The views selected were from the following locations. The numbers are as those used as shown on the following pages:-

1. **A701** – this provides views looking to the south, across the planting, down the valley.
2. **A701** – this provides views looking to the northeast over the Devils Beef Tub.
3. **Annanhead Hill** – this provides views looking to the southeast over the Devils Beef Tub and down the valley.
4. **Old Edinburgh Road** – this shows the view looking to the north- west onto Ericstane South.

5. **Old Edinburgh Road** – this shows the view looking to the southwest from Corehead Farm.

6. **Old Edinburgh Road** – this shows the view looking to the northwest from near Ericstane Farm onto Ericstane South.

One map view and two panoramas have been produced for each viewpoint:-

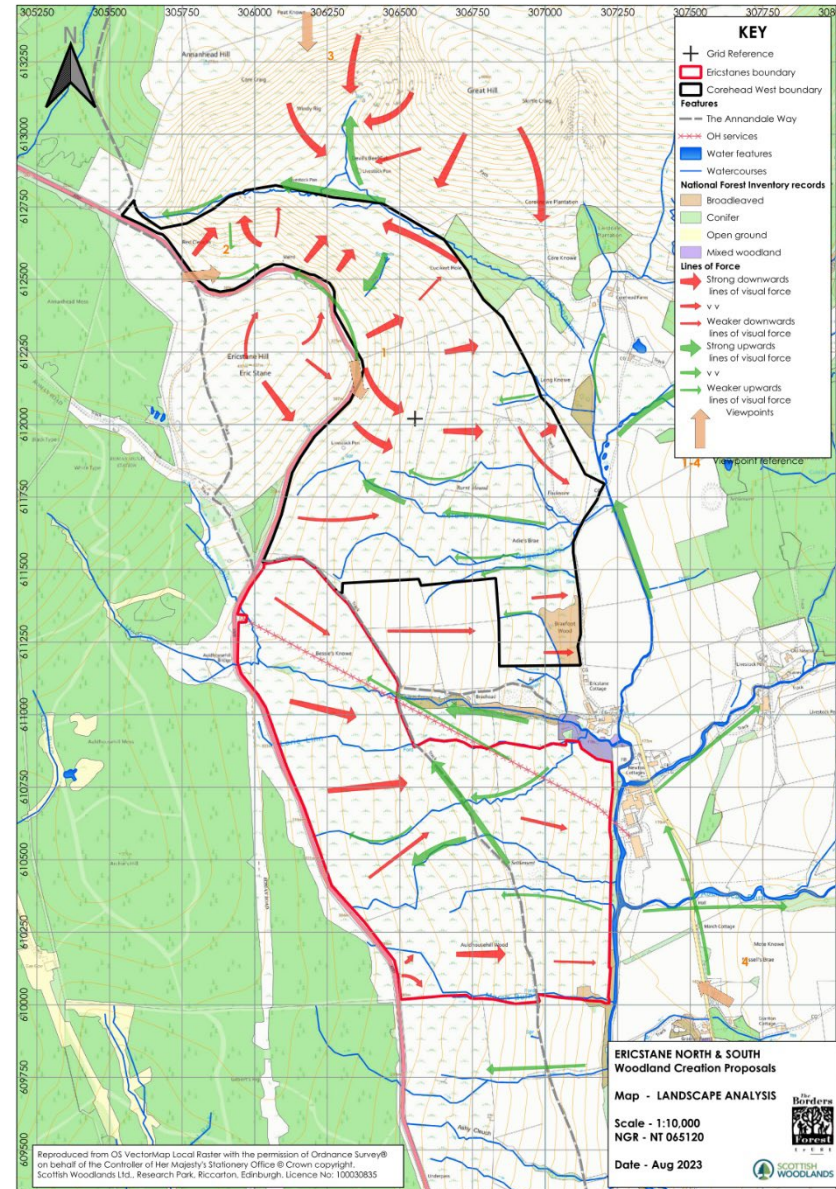
Map View – the map shows the location of the viewpoint, the direction of the view, and the footprint of the design, as it would appear in 2064 in vibrant colours to represent species mixes.

Panorama 2023 – the upper image provides a perspective image in the Timeline 2023, before any new planting. Information on existing woodlands is gleaned from the National Forest Inventory. Note that small woodlands, trees lines and individual trees are unlikely to be represented.

Panorama 2064 – the lower image shows the woodland design as it will appear in 40 years time, using yield class predictions to produce tree heights. Existing woodland is shown as it is in 2023 (i.e. not including for any future growth), with the new woodland in Spring colours. In essence, this drawing shows the anticipated view just prior to any first rotation felling.

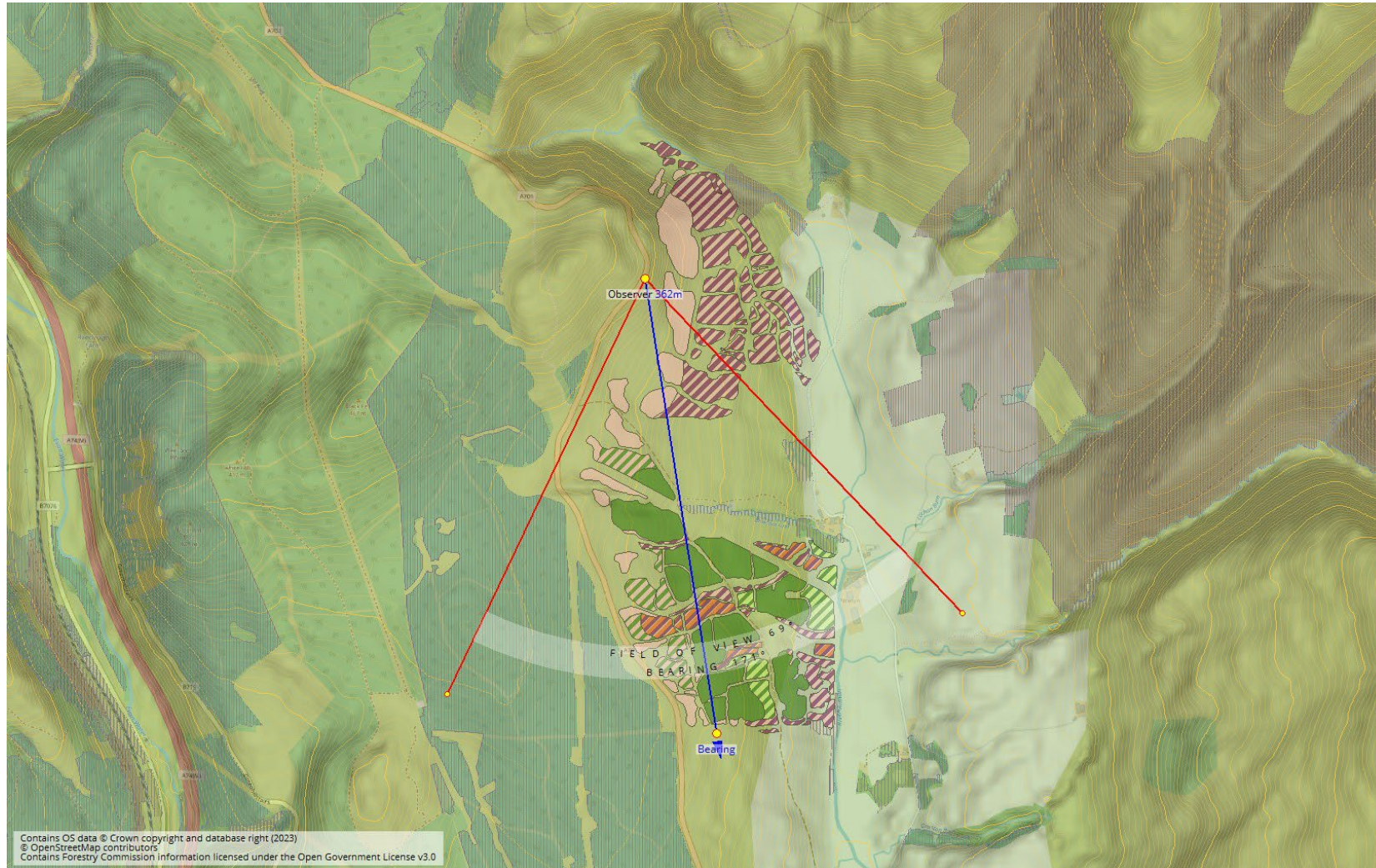
Ericstane North & South Landscape Visualisations – Prospect Designer

Location of Viewpoints



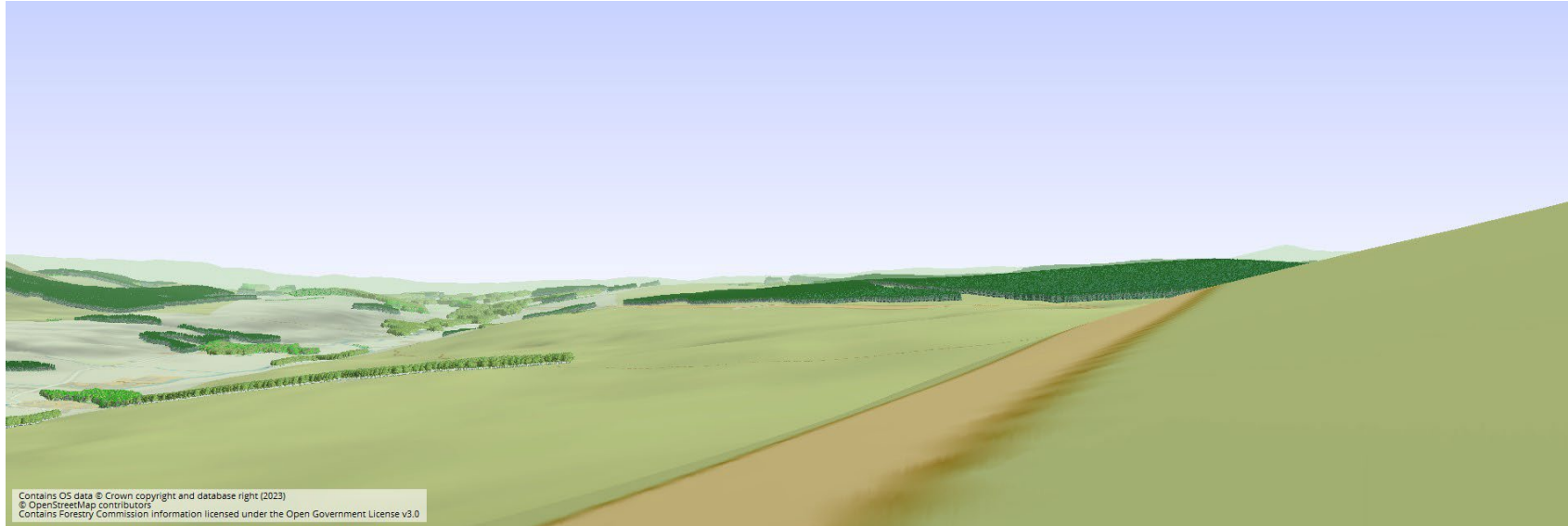
Ericstane North & South Landscape Visualisations – Prospect Designer

View 1 – NT 063 121

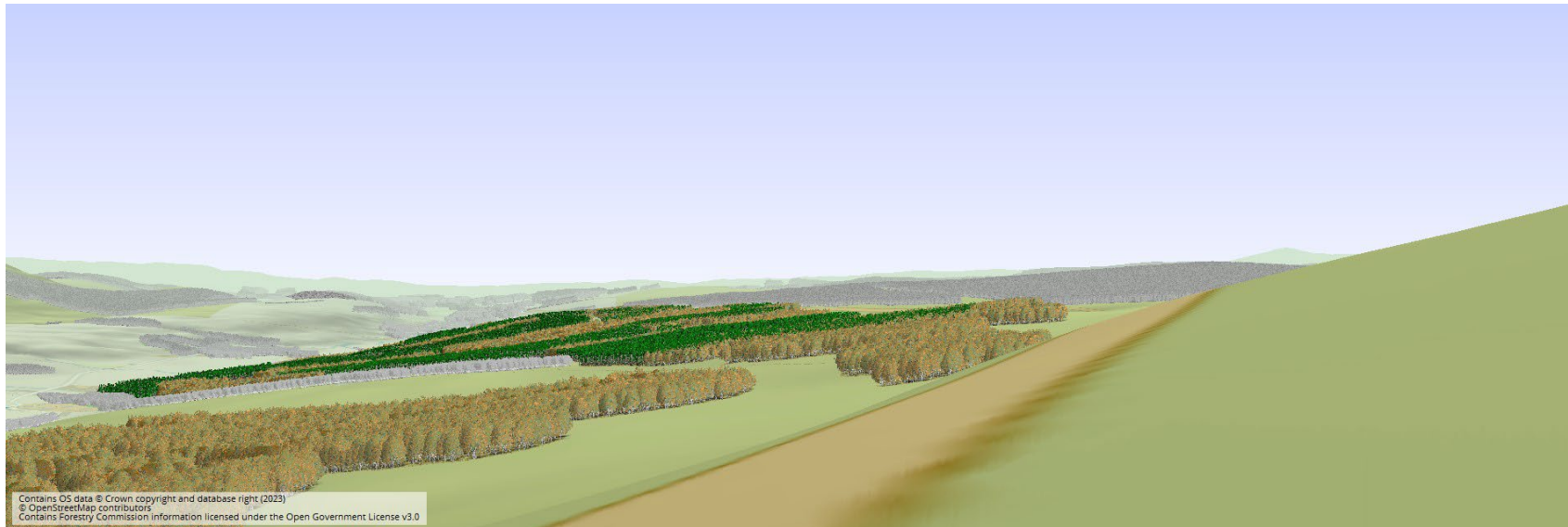


Ericstane North & South Landscape Visualisations – Prospect Designer

View 1 – NT 063 121 Panorama 2023 & 2064



Year 2023

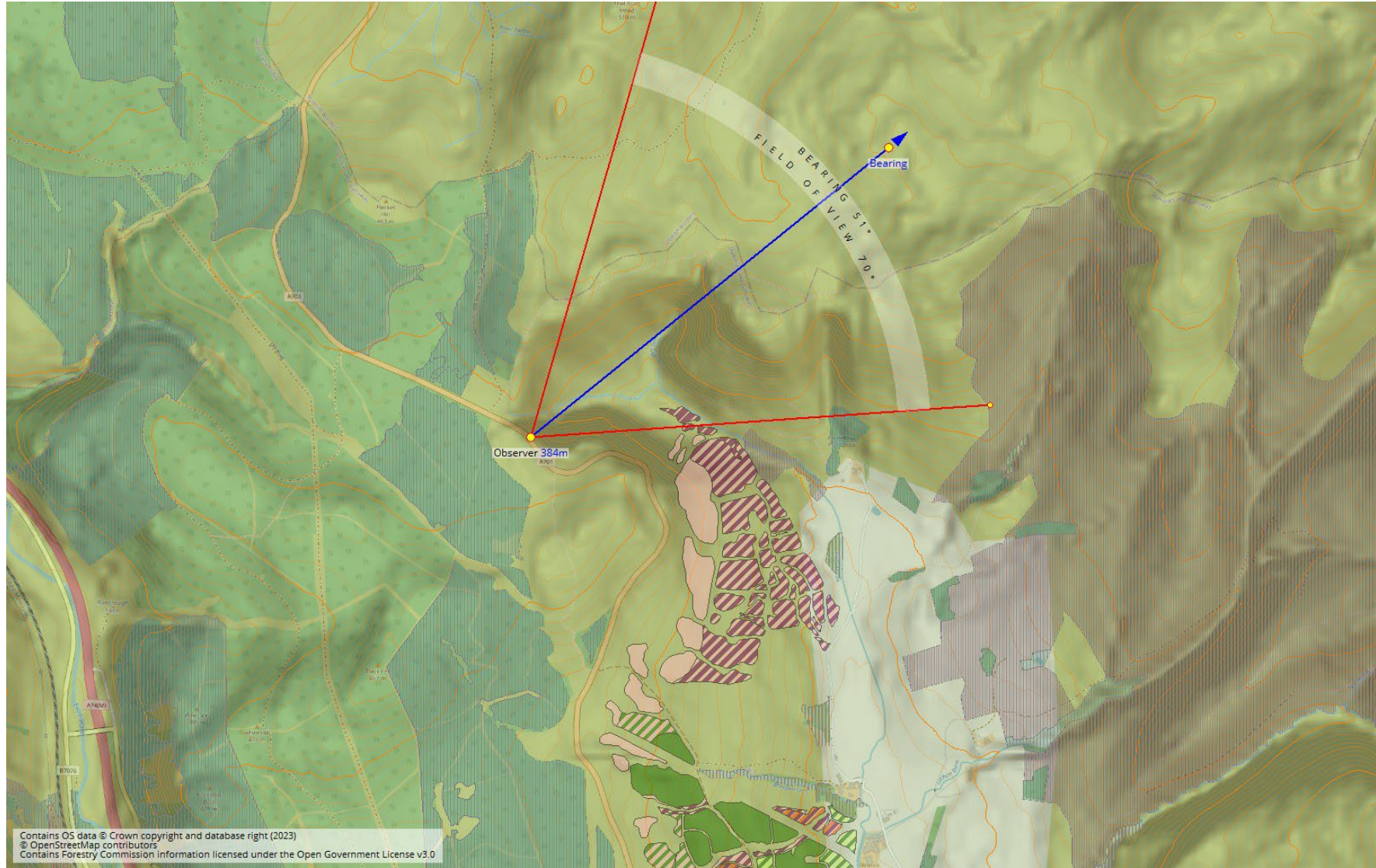


Year 2064

Ericstane North & South Landscape Visualisations – Prospect Designer

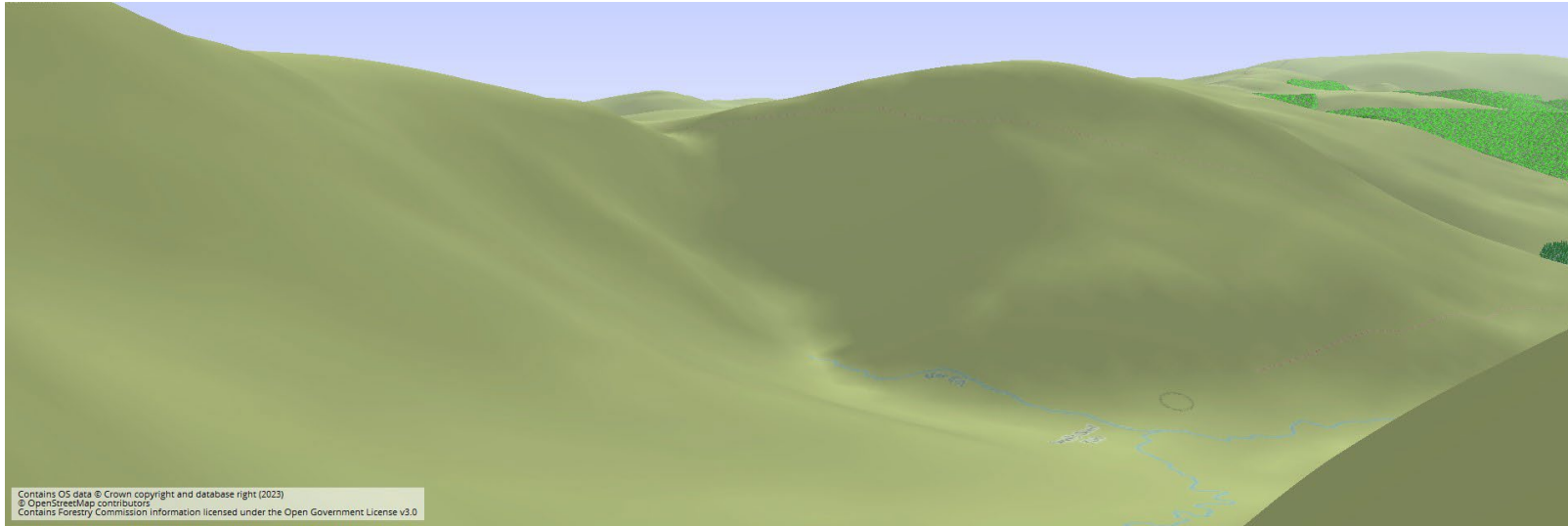
View 2 – NT 057 126

Map View 2064

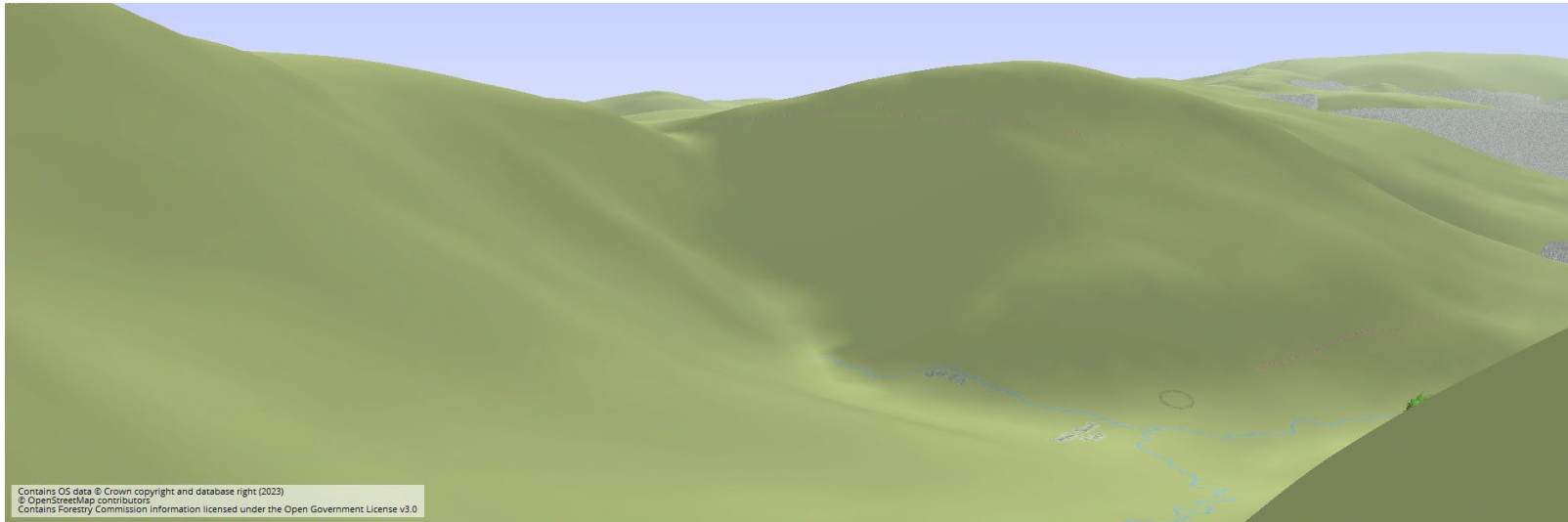


Ericstane North & South Landscape Visualisations – Prospect Designer

View 2 – NT 057 126 Panorama 2023 & 2064



Year 2023

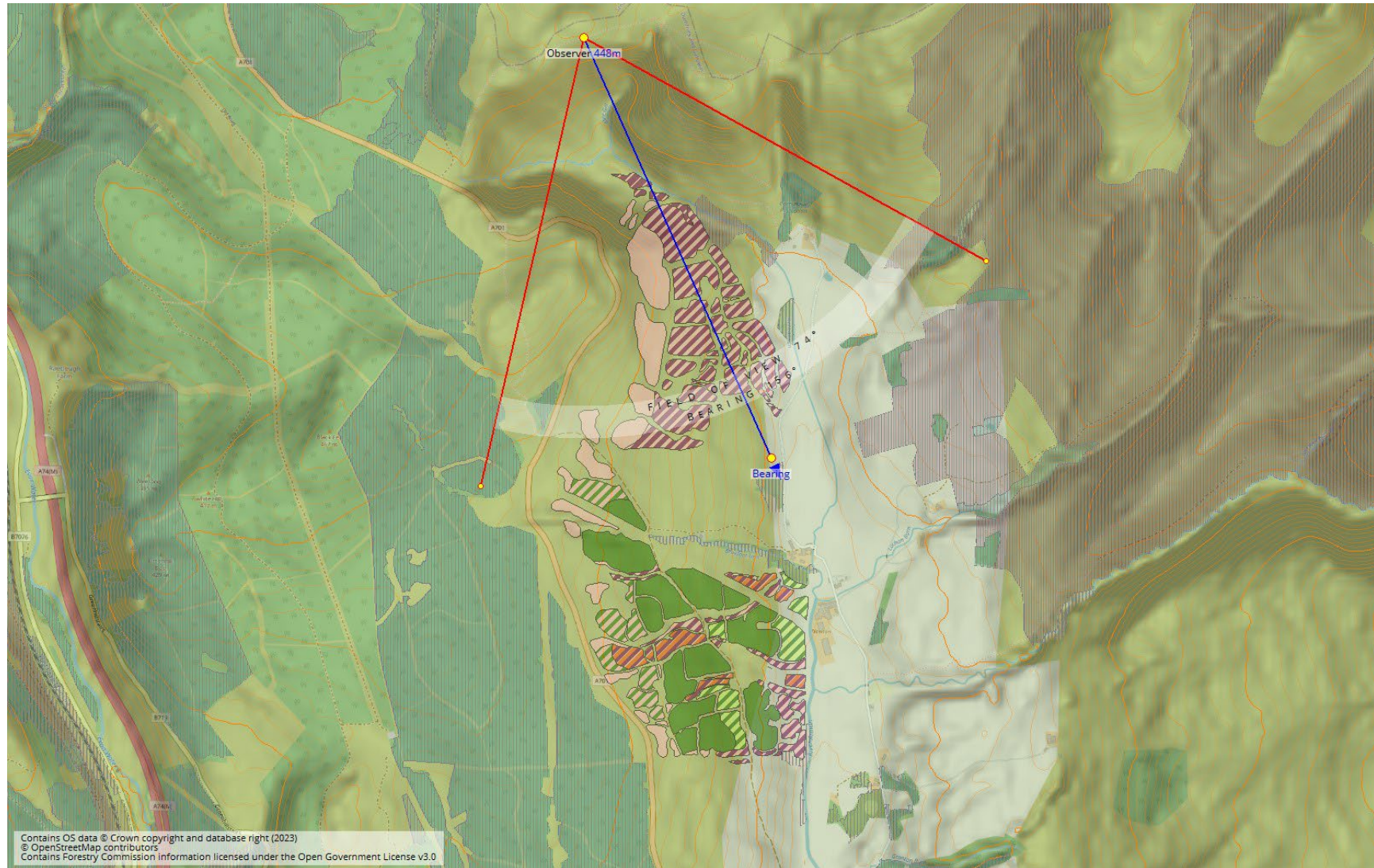


Year 2064

Ericstane North & South Landscape Visualisations – Prospect Designer

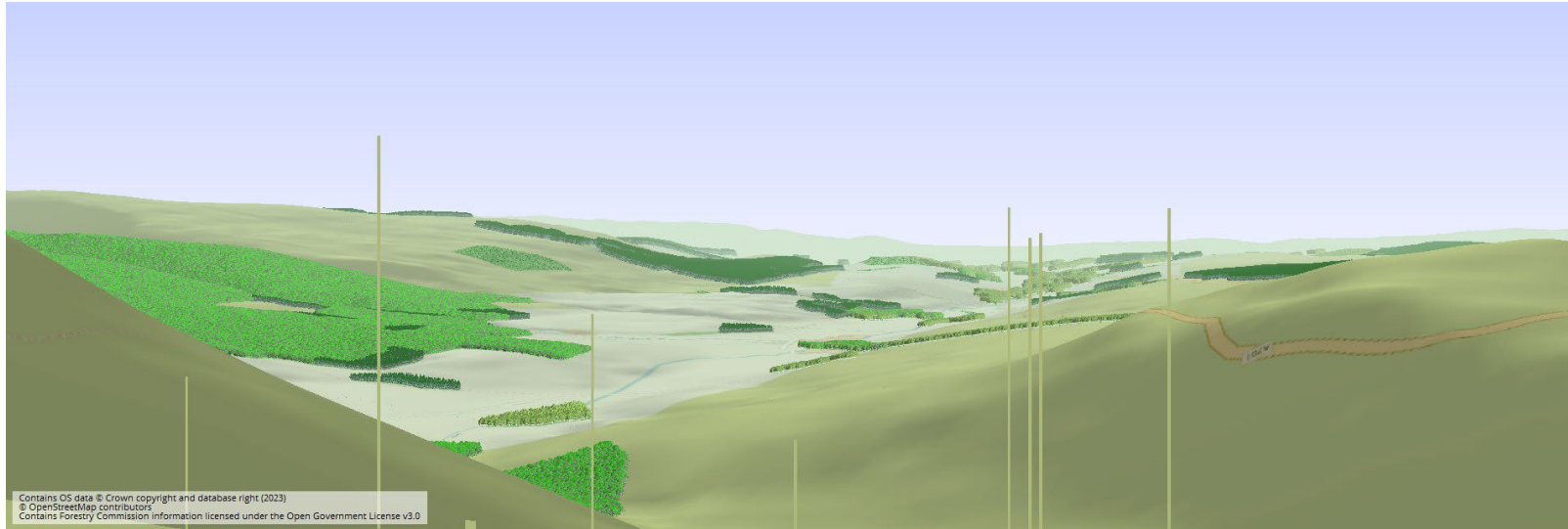
View 3 – NT 062 134

Map View 2064



Ericstane North & South Landscape Visualisations – Prospect Designer

View 3 – NT 062 134 Panorama 2023 & 2064



Year 2023

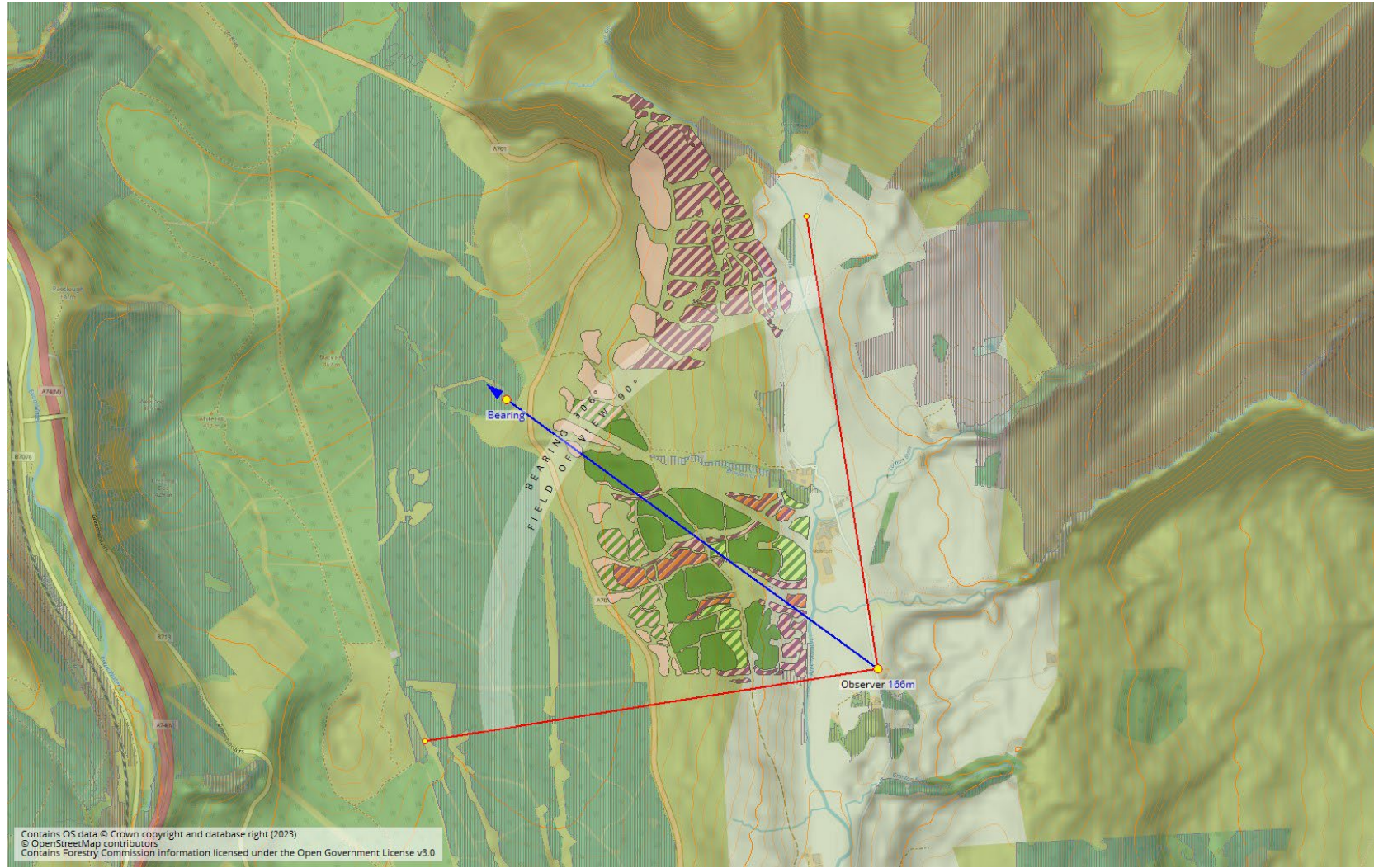


Year 2064

Ericstane North & South Landscape Visualisations – Prospect Designer

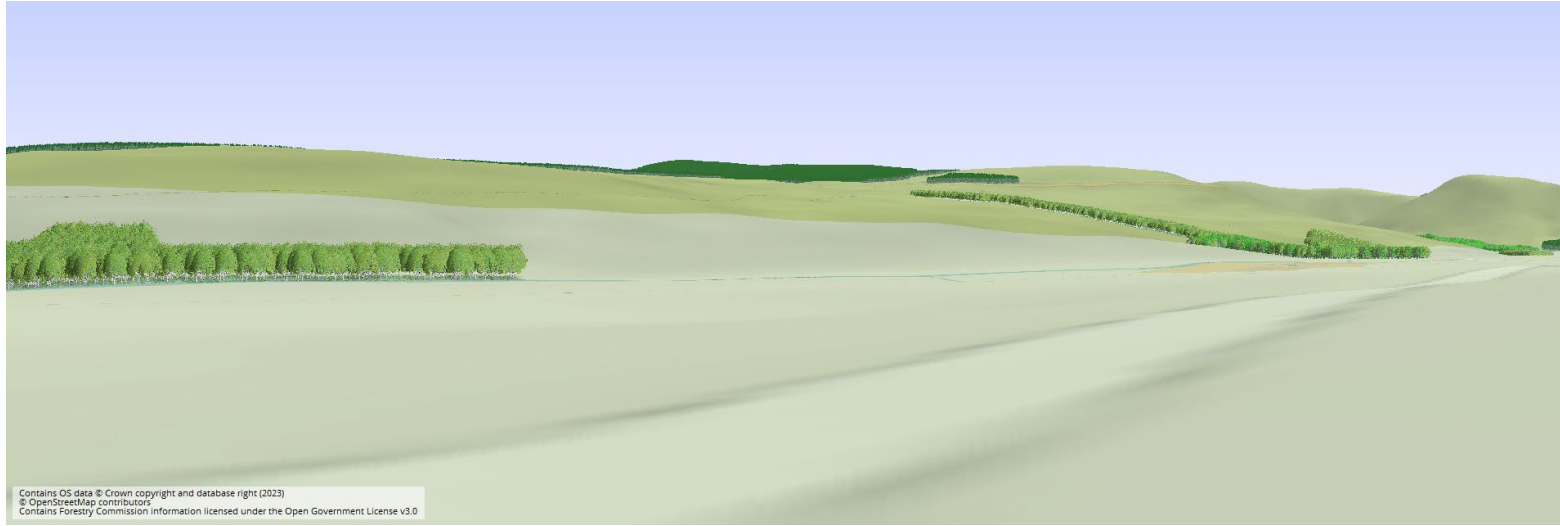
View 4 – NT 076 101

Map View 2064

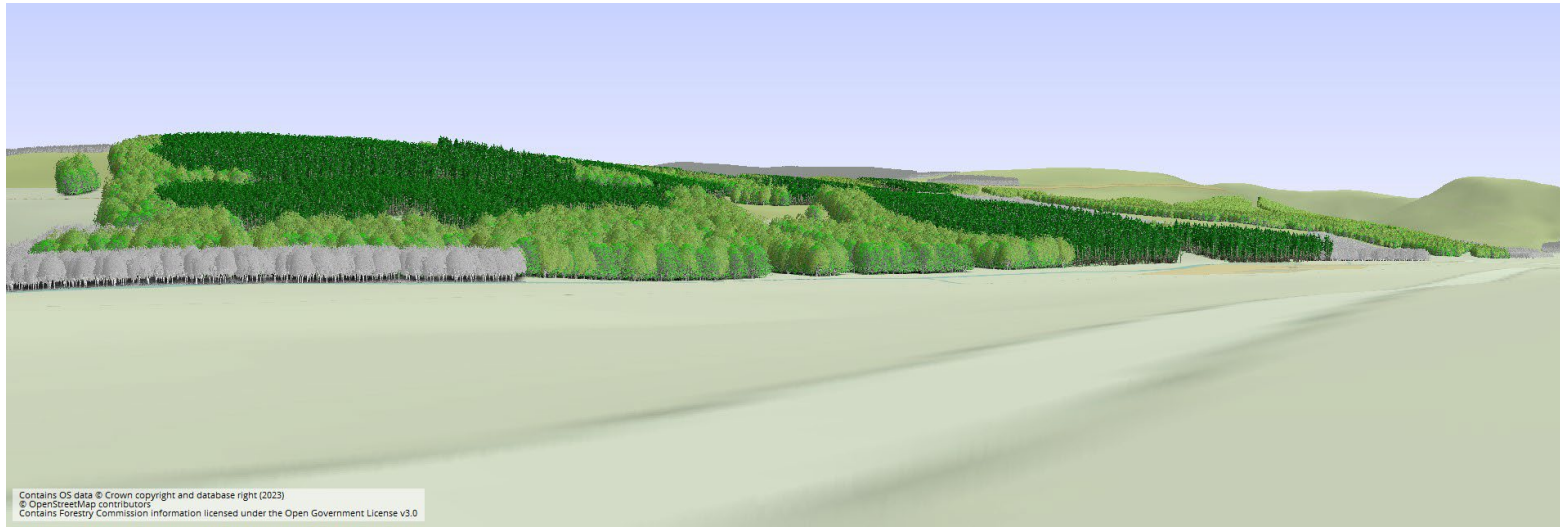


Ericstane North & South Landscape Visualisations – Prospect Designer

View 4 – NT 076 101 Panorama 2023 & 2064



Year 2023

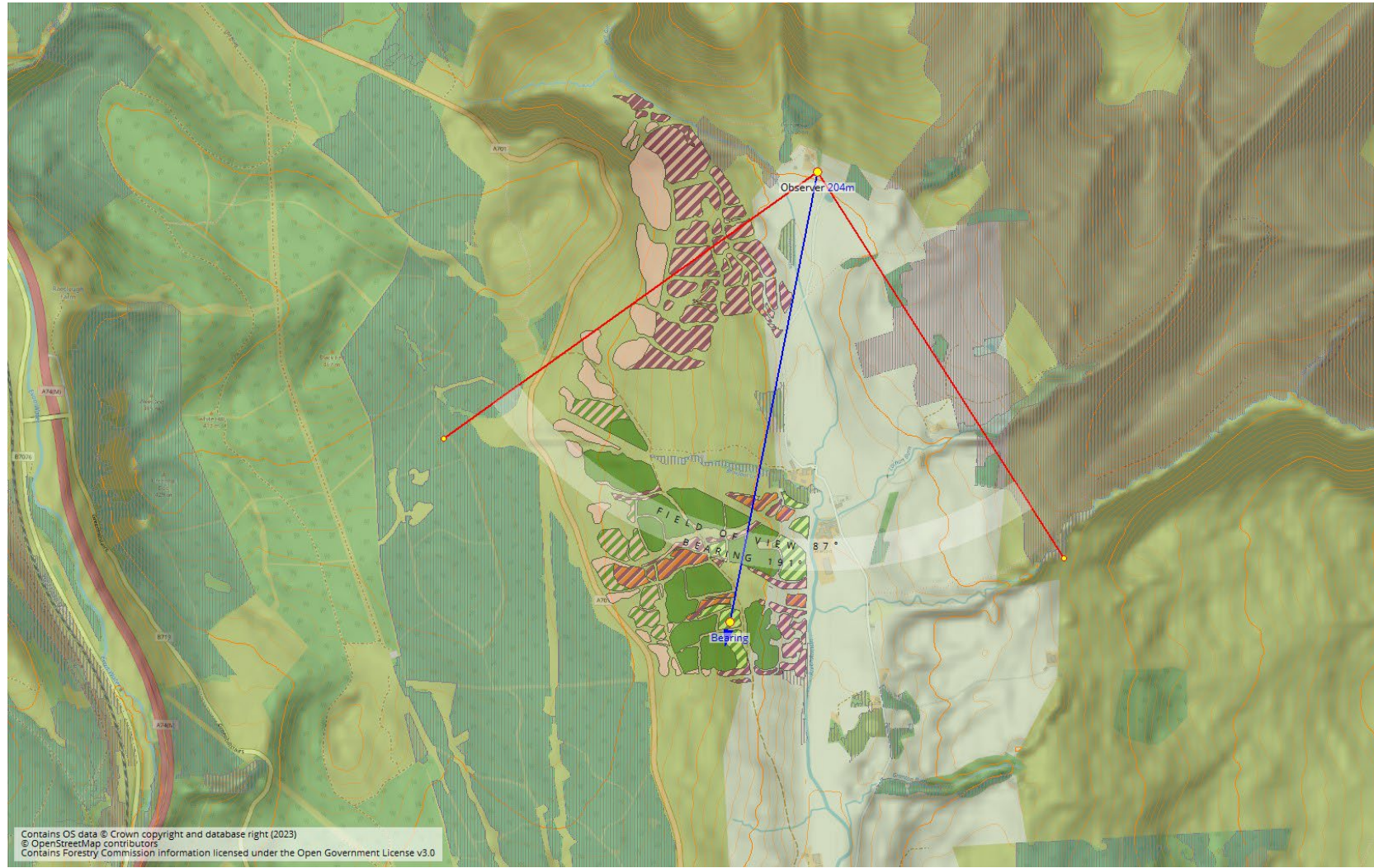


Year 2064

Ericstane North & South Landscape Visualisations – Prospect Designer

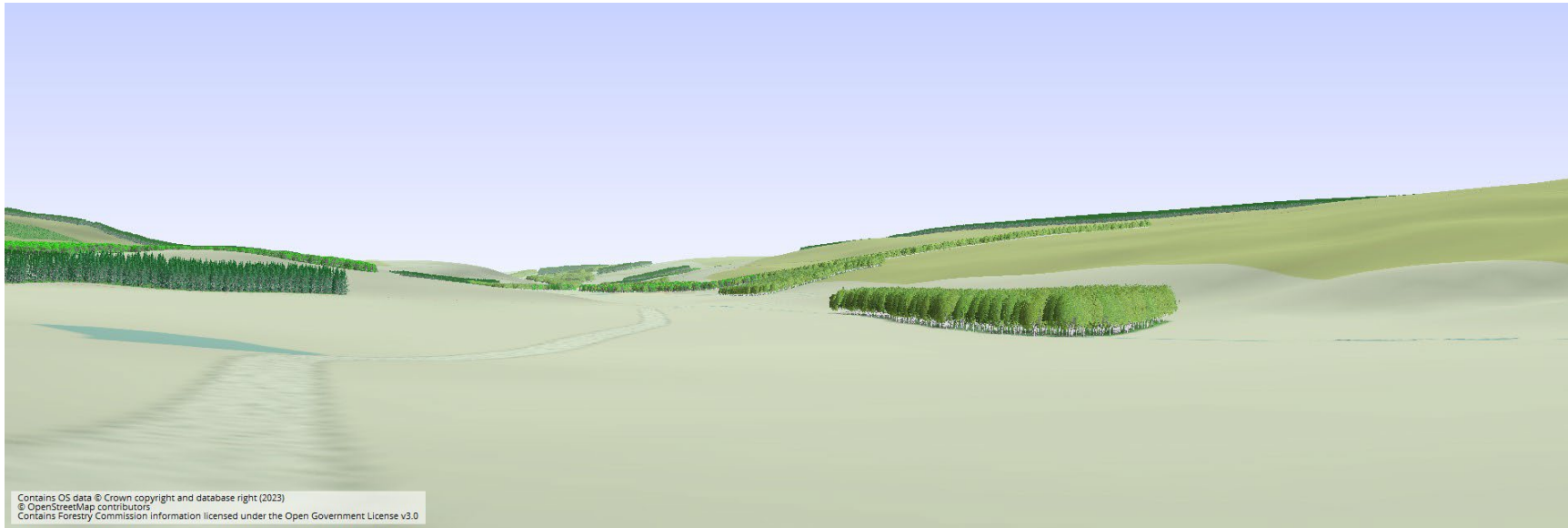
View 5 – NT 073 124

Map View 2064

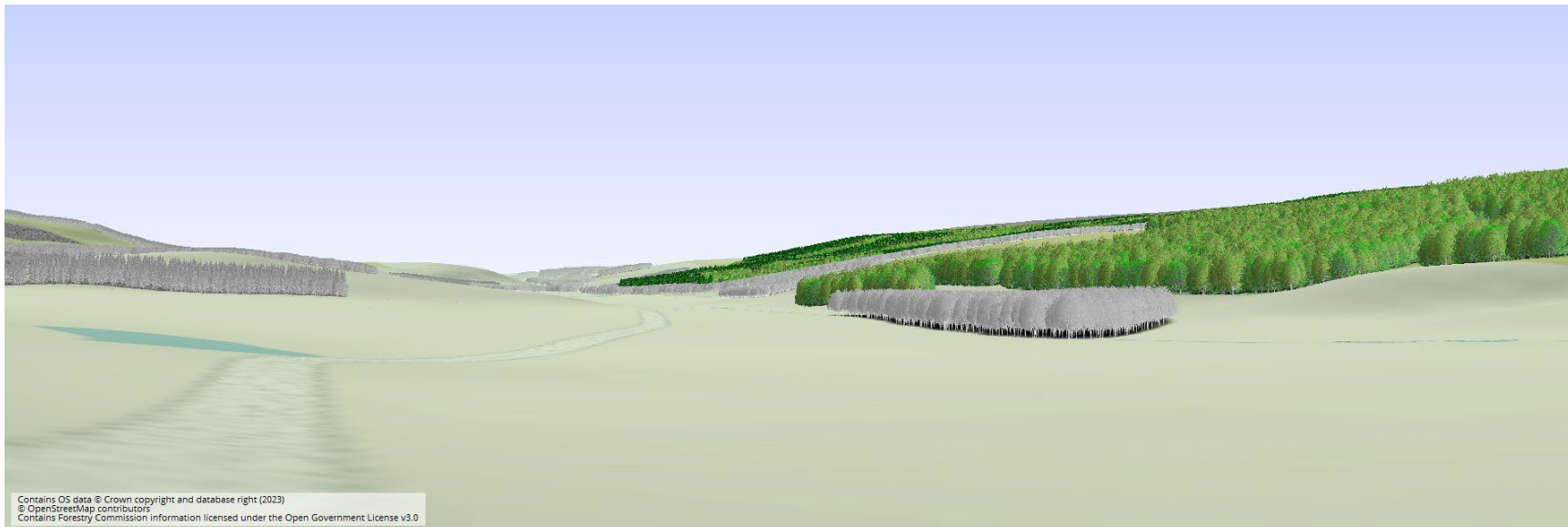


Ericstane North & South Landscape Visualisations – Prospect Designer

View 5 – NT 073 124 Panorama 2023 & 2064



Year 2023



Year 2064

Ericstane North & South Landscape Visualisations – Prospect Designer

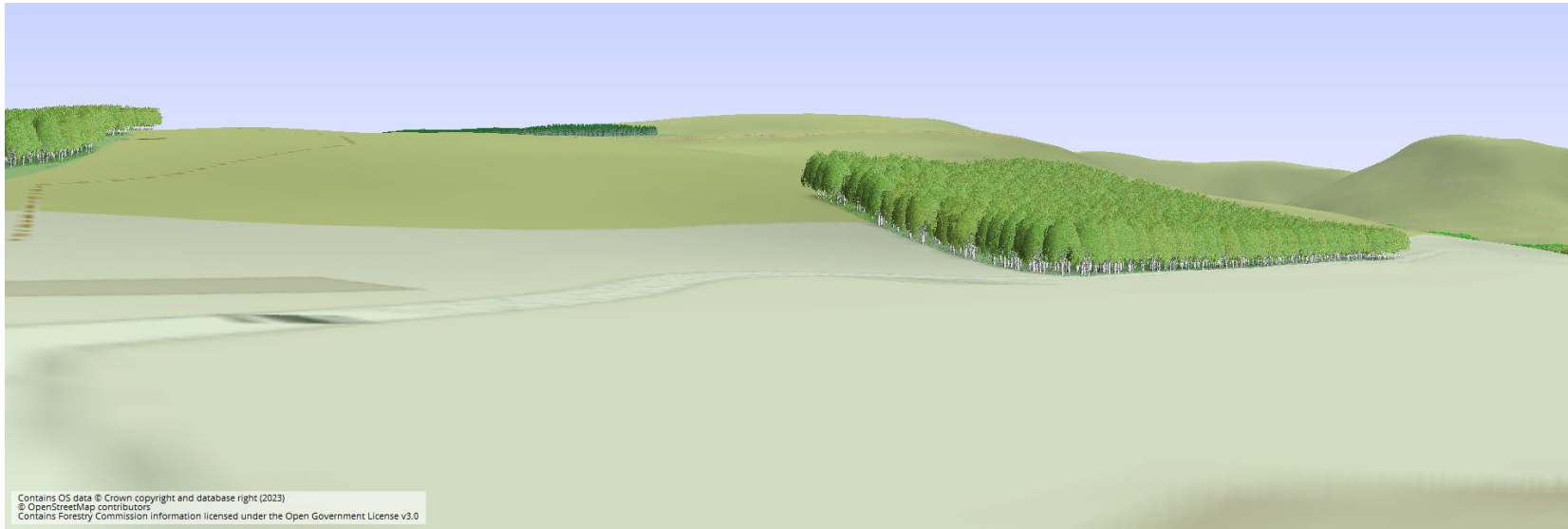
View 6 – NT 072 110

Map View 2064



Ericstane North & South Landscape Visualisations – Prospect Designer

View 6 – NT 072 110 Panorama 2023 & 2064



Year 2023



Year 2064