

# Technical Services

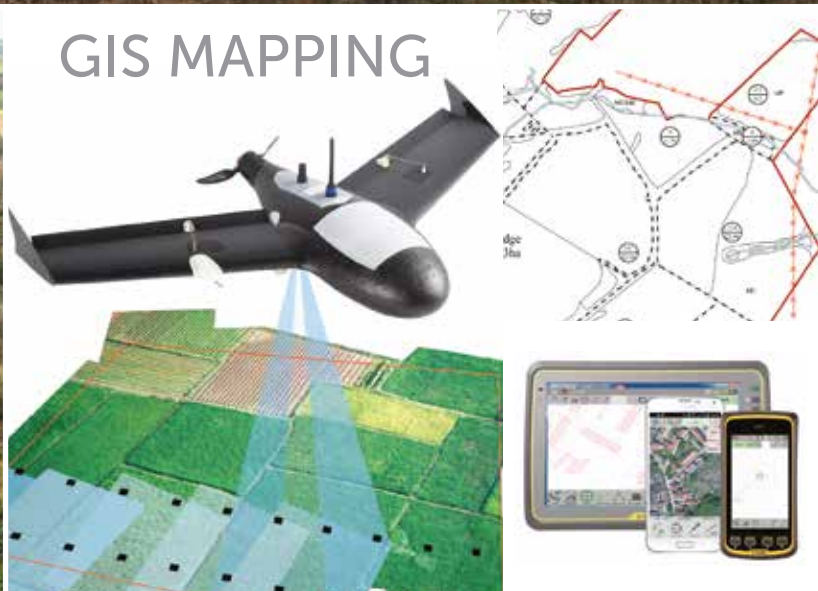
[www.scottishwoodlands.co.uk](http://www.scottishwoodlands.co.uk)



WOODLAND INSURANCE



GIS MAPPING



The core forestry management work of our business is supported by our Technical Department. A diverse team of technical specialists offer a range of skills that support the delivery of our services.



To complement our full range of Forest management services, we can also offer specialist technical advice and support.

Our highly skilled technical team includes experienced foresters, GIS mapping specialists, software developers and insurance advisors. This diversity of skill and experience allows us to deliver a wide range of bespoke services to meet our clients' unique requirements.

Efficient forestry management involves the collection, processing and analysis of forest data. Our digital mapping services use industry leading software, remote sensing techniques and the latest in field data capture.

Data is securely stored and processed using our bespoke forestry specific digital mapping database & software, it includes custom developed workflows and processing

tools that make even the most complex tasks simple and efficient.

For around 50 years, Scottish Woodlands has provided woodland owners with specialist woodland insurance protection which includes cover for fire, windthrow, and owners liability, plus a range of other policy features developed to protect an owner's investment.

Quotations for cover can be provided according to requirement and growers can be confident of an efficient and professional approach in the event of a claim on their policy.

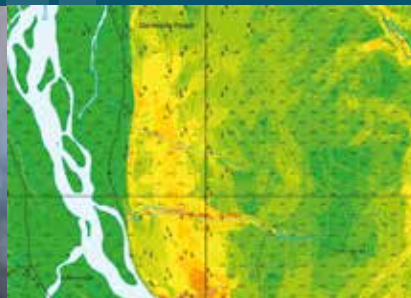
These specialist services can be provided as part of a package with our main services or independently according to requirement.

## Mapping & Data Services

- Grant Applications
- Forest Design Planning
- Production Forecasting
- Remote Sensing
- Land registry
- Data Processing
- 3d Visualisation

## Woodland Insurance

- Fire and Windthrow
- Property Owner's Liability
- Landslip
- Protection for Transplants and Felled Timber
- Extinguishing Costs including Helicopter Use
- Underwritten by 'A'-rated Insurer
- Competent Woodland Insurance Advisers



Slope in Degrees



Please contact us for further information:

### Technical Director:

**Simon Oldham**

M: 0131 451 5154

E: [simon.oldham@scottishwoodlands.co.uk](mailto:simon.oldham@scottishwoodlands.co.uk)

### Woodland Insurance:

**Sandra Lang**

**Insurance Co-ordinator**

T: 01997 487426

E: [sandra.lang@scottishwoodlands.co.uk](mailto:sandra.lang@scottishwoodlands.co.uk)

### IT - GIS and Mapping:

**Adrian Kirby**

**Head of IT & GIS**

M: 0131 451 5154

E: [adrian.kirby@scottishwoodlands.co.uk](mailto:adrian.kirby@scottishwoodlands.co.uk)



### Head Office:

Research Park, Riccarton,  
Edinburgh EH14 4AP

T: 0131 451 5154

E: [enquiries@scottishwoodlands.co.uk](mailto:enquiries@scottishwoodlands.co.uk)

