



Based on strong foundations developed in our forestry management experience, Scottish Woodlands Utilities Division has developed to become a leading service provider for the Utility supply industries.

Rail



Scottish Woodlands has worked on the rail network since 1996 and has worked with Network Rail and associated rail providers in providing a safe and robust infrastructure for the 21st century.

The key services include:

- Vegetation Clearance Operations
- Road Rail Plant and Operators
- All types of Fence Installation
- Dangerous Tree Removal
- Arboriculture Assessments
- Level Crossing Maintenance
- Access Point Construction
- Invasive Species Control

These operations are delivered by a dedicated team of field workers, supervisors and managers with the necessary qualifications and experience to provide each client with the correct solutions to meet their objectives.

- Full Rail Principal Contractor License
- Over 100 PTS Staff
- Dedicated Rail Management Team
- Plant Operations Scheme License
- RISQS Audited and Certified

Through expansion in our rail sector of recent Scottish Woodlands have purchased a suite of specific be-spoke Railway equipment to facilitate the vegetation clearance sector for the rail industry.

Scottish Woodlands Owned Road Rail Vehicles:

- 2 x On Track Plant Excavators bespoke for Vegetation Clearance
- Bandit On Track Plant Whole Tree Chipper
- 2 x Mercedes Road Rail Vehicle Unimogs with Chipper Attachments
- Neotech On Track Plant Skyraider Mobile Elevated Work Platform
- Premaquip Kubota Road Rail Vehicle Personnel Transporter

Electricity



Scottish Woodlands has worked throughout Scotland with both SSEN and SPEN in ensuring that Scotland's network is maintained and compliant with guidelines set out by the Electrical Standards. We are currently the largest supplier in Scotland providing tree clearance operations adjacent to the power distribution network and provide operators on a daily basis from the Borders to the Highlands.

We ensure that all our operators are trained and certified to provide a high quality service adhering to industry guidelines. The operators are resourced from our main depots based in Perthshire, North Lanarkshire, the Borders and Inverness-shire.

Key areas:

- Industry Safety Clearance Standards Provided
- Arboricultural work completed on 3rd party ground
- Powerline Shutdown Operations
- Live apparatus working as approved by Network Provider
- Storm Response and 24/7 Emergency Call Out Facilities

To deliver the works we provide:

- Direct employed UA trained Arborists and Chainsaw Operators
- Specialist Forest Machinery
- Dedicated Electrical Management Team
- UA Trained Surveyors
- Full Internal Management Systems

Projects



The division has expanded over the past 15 years, working with different clients to deliver new network projects for the 21st Century throughout Scotland. Often working as Principal Contractor to deliver full CDM managed projects integrated with our own management systems, a wide range of project tasks have been successfully completed.

Each Project has its own specific goals and targets and Scottish Woodlands can provide the range and scale of different forestry operations to meet the client's objectives.

Key areas:

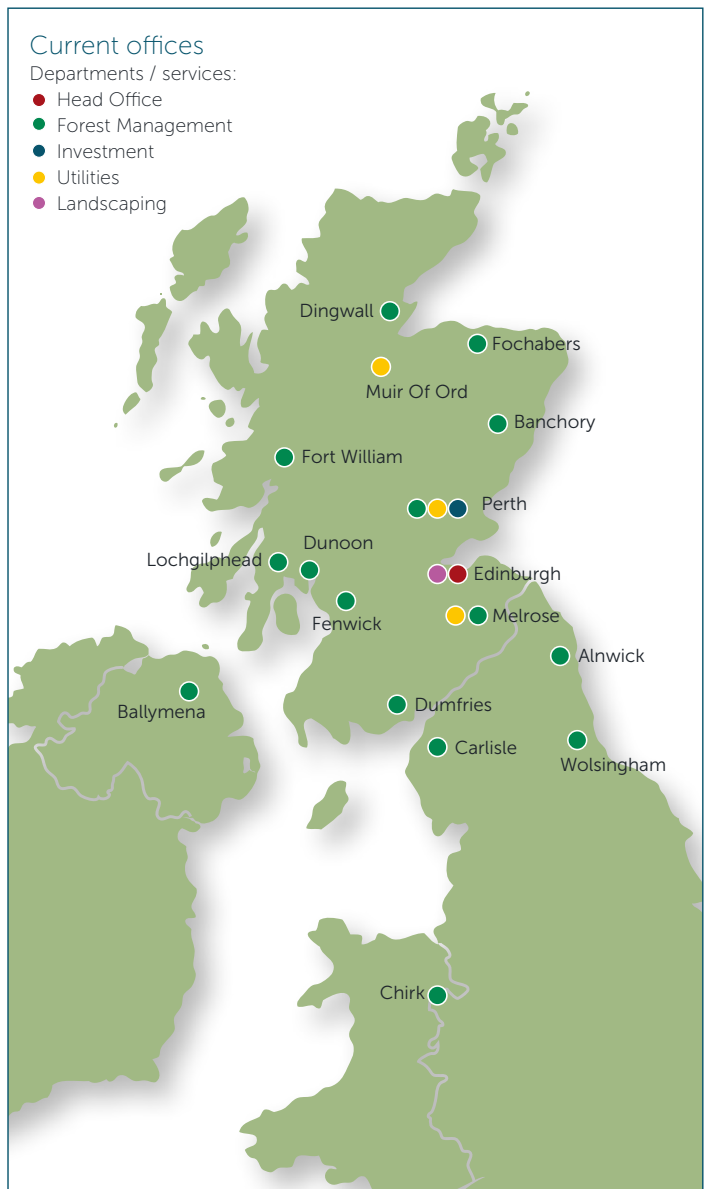
- Forest and Tree Clearance for Engineering and Development Contracts
- Timber Harvesting and Extraction
- Timber Haulage and Marketing
- Stump Removal and Mulching
- Specialist Chainsaw and Arboriculture Operations
- Specialist Soft and Steep Ground Forestry Equipment
- Brash Recovery and Bio-Mass Marketing
- Forestry Consultancy
- Environmental Assessments and License Submissions
- Access Road Construction
- Bridge Installation
- Tree Planting and Landscaping
- CDM Management

Through expansion changes within the Utilities Division we can deliver specific projects with 100% Scottish Woodland employed and Scottish Woodland owned forestry machinery.





The division has delivered high standards of tree clearance and fencing work for over 20 years to all sectors throughout the industry. Services are planned and delivered by a team that are qualified and experienced in all sectors of utility and construction operations.



Please contact us for further information:



Head Office:

Research Park, Riccarton,
Edinburgh EH14 4AP
T: 0131 451 5154
E: enquiries@scottishwoodlands.co.uk

Perth Depot (Utilities):

Craig Nimmo
Utilities and Landscaping Director
T: 01738 621708
E: perthutilitiesenquiries@scottishwoodlands.co.uk

Almondgrove Place,
Inveralmond Industrial Estate,
Perth PH1 3TR

