

OLIVER FIELD WOODLAND CREATION

Landscape Perspectives

Using Map Maker Prospect

Oliver Field Woodland Creation

Map Maker Prospect Designer

A landscape analysis has been undertaken to inform the design of the proposed woodland at Oliver Field, near Tweedsmuir.

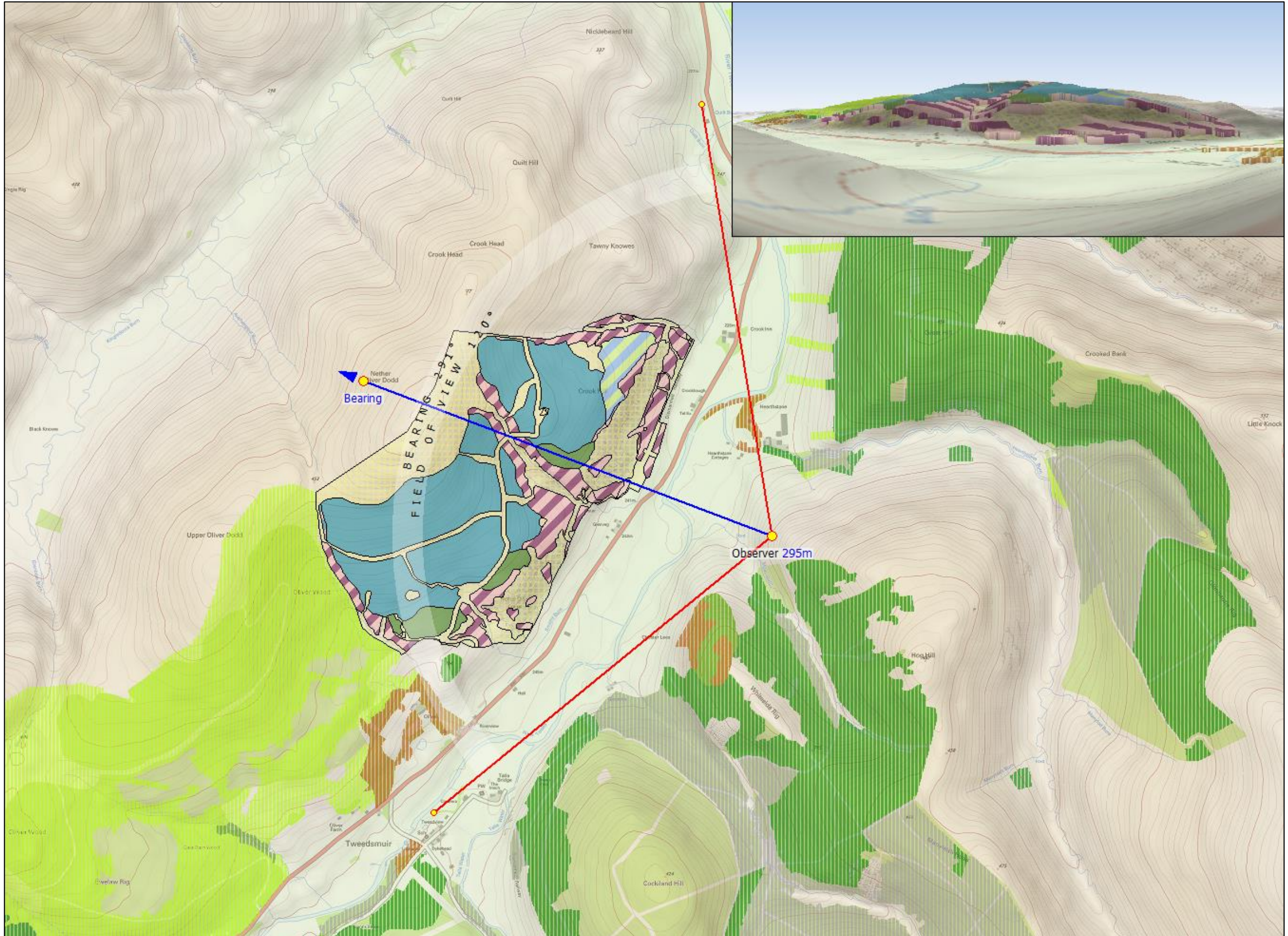
Three key viewpoints were identified in the analysis, and visualisations of the woodland proposals have been produced for these views.

The visualisations are shown as panoramic views:

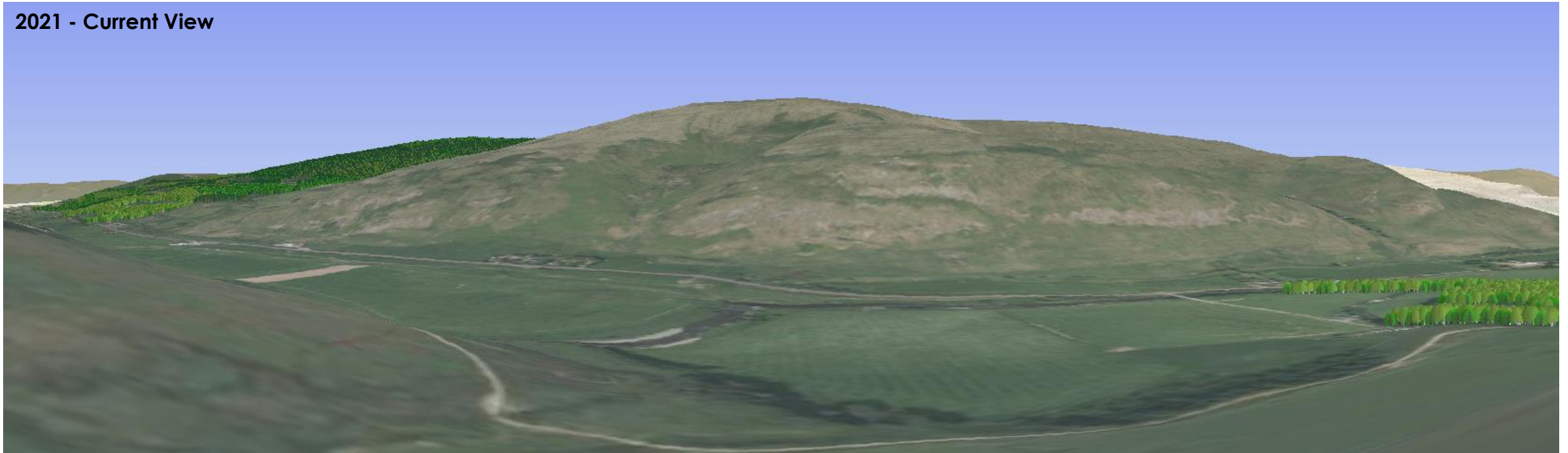
The first page of each viewpoint shows a stylised plan of the proposed woodland on a base map, and a small inset showing perspective as seen from the identified viewpoint. On the subsequent page, the upper image shows a perspective representation of the existing situation in 2021 based on tree cover information recorded in the National Forest Inventory (NFI) 2018.

The lower image shows a visualisation of the landscape 40 years after planting (2062) with the proposed woodland planting superimposed. Please note that the NFI woodlands do not alter in terms of height between 2021 and 2062.

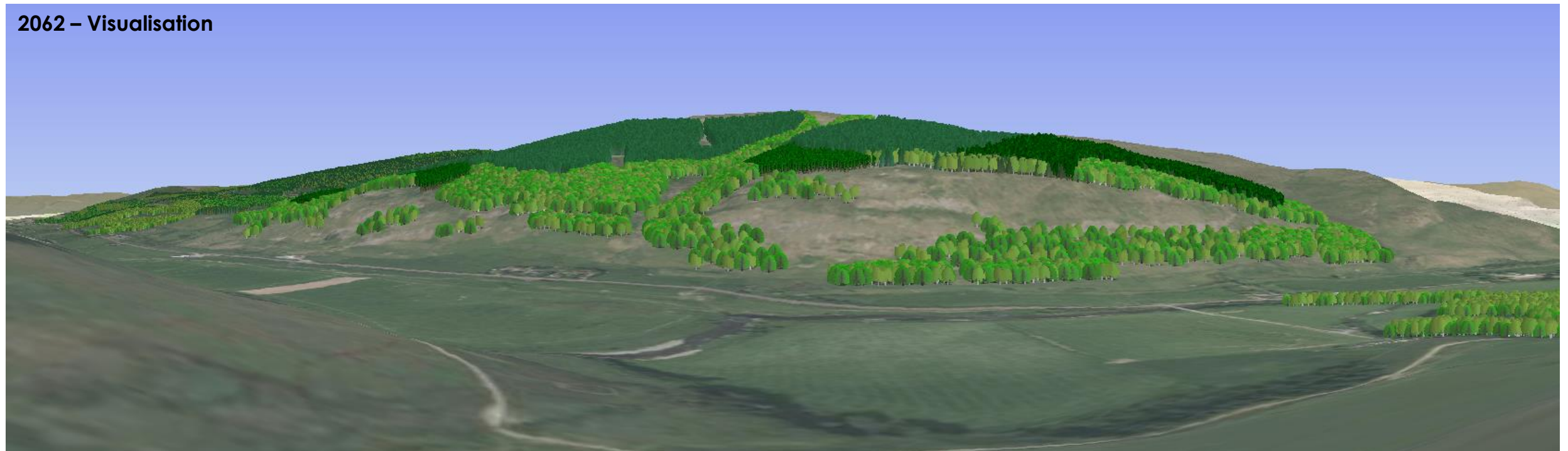
All panoramic views have been produced showing the trees represented in spring foliage.



2021 - Current View

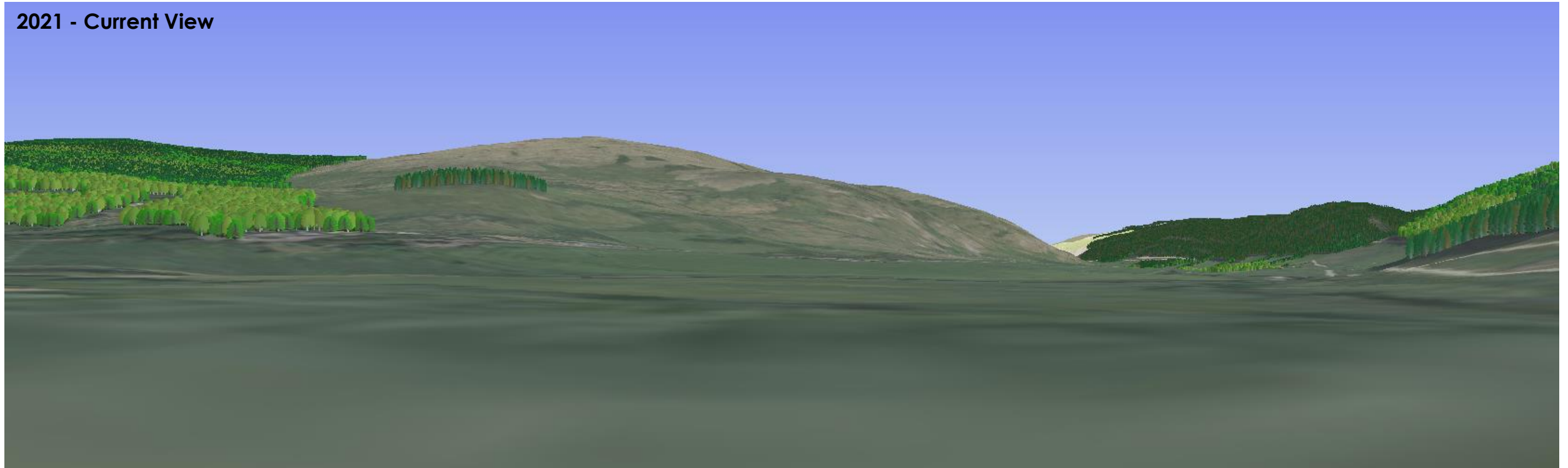


2062 – Visualisation

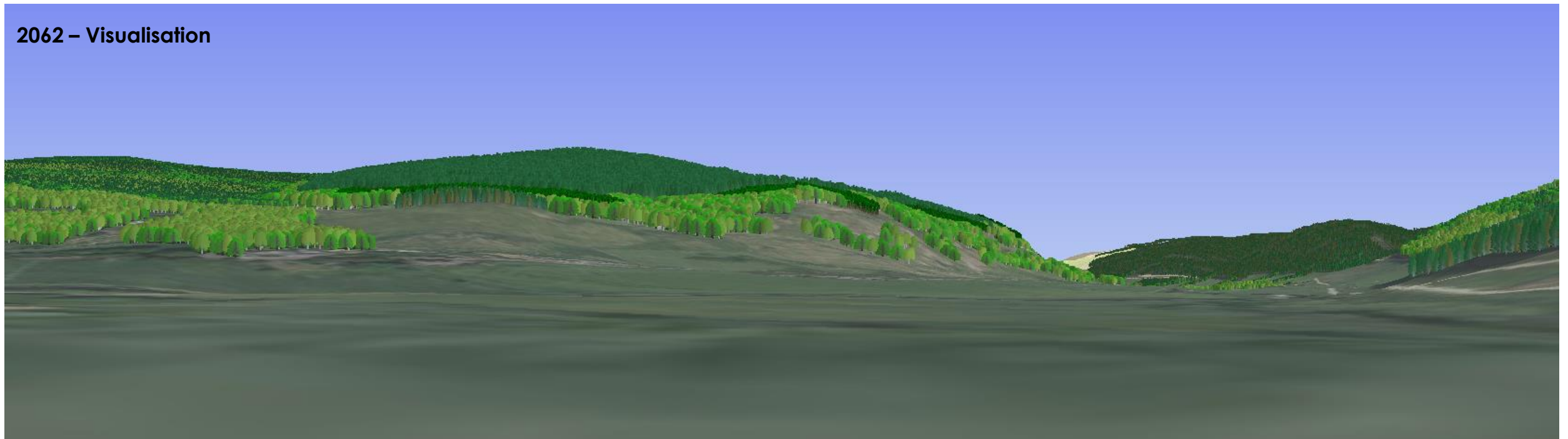




2021 - Current View

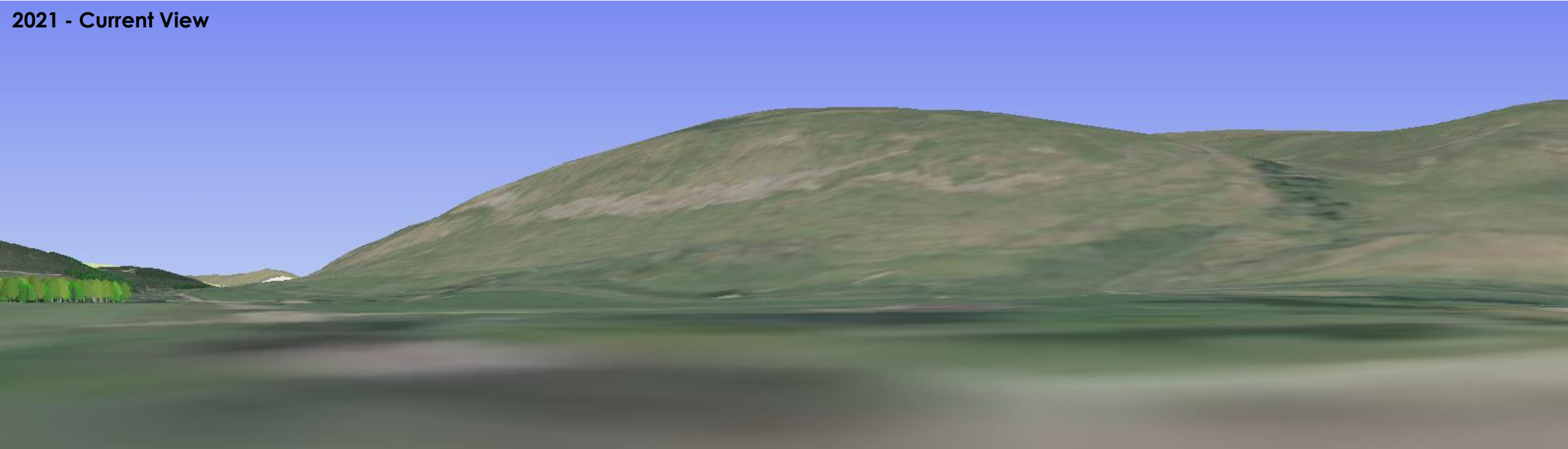


2062 – Visualisation





2021 - Current View



2062 – Visualisation

