

AUCHENSOUL WOODLAND CREATION

Appendix 3: Landscape Perspectives

Using Map Maker Prospect

Auchensoul Woodland Creation

Map Maker Prospect Designer

A landscape analysis has been undertaken to inform the design of the proposed woodland at Auchensoul, near Barr.

Six key viewpoints were identified in the analysis, and visualisations of the woodland proposals have been produced for these views. The location of the viewpoints is shown on Map 1, while Map 2 shows the proposed woodland design in plan form.

The visualisations are shown as panoramic views:

The first page of each viewpoint shows a stylised plan of the proposed woodland on a base map, and a small inset showing perspective as seen from the identified viewpoint. On the subsequent page, the upper image shows a perspective representation of the existing situation in 2021 based on tree cover information recorded in the National Forest Inventory (NFI) 2018.

The lower image shows a visualisation of the landscape 38 years after planting (2060) with the proposed woodland planting superimposed. Please note that the NFI woodlands do not alter in terms of height between 2021 and 2060.

All panoramic views have been produced showing the trees represented in spring foliage.

Viewpoints

Viewpoint 1 – East (U66)

Auchensoul Hill becomes visible when travelling towards Barr on the U66. Forestry planting at Glengennet Forest is visible on the north side of the valley, and agricultural fields dominate the valley floor. The mature broadleaved woodlands by the River Stinchar are an attractive feature in the landscape.

Viewpoint 2 – Doularg Hill

Although not a public vantage point, extensive views of the site are available from the private road to White Knowes over Doularg Hill. This is an attractive view dominated by the convex slopes of Auchensoul Hill, giving way to mixed woodlands above Alton Albany and the River Stinchar, with the Village of Barr at the valley bottom.

Viewpoint 3 – B734 “The Screws”

Extensive views over the Stinchar River Valley are available from the B734 approaching the village of Barr, locally known as “The Screws”. Agricultural fields dominate the lower ground, together with broadleaved woodlands along the River Stinchar. The ground rises steeply to the west towards Auchensoul Hill, and mature conifer plantations are visible in the higher ground behind Barr Village. Several representations have been provided for this point, showing different views when travelling through the road.

Viewpoint 4 – B734 (South-west)

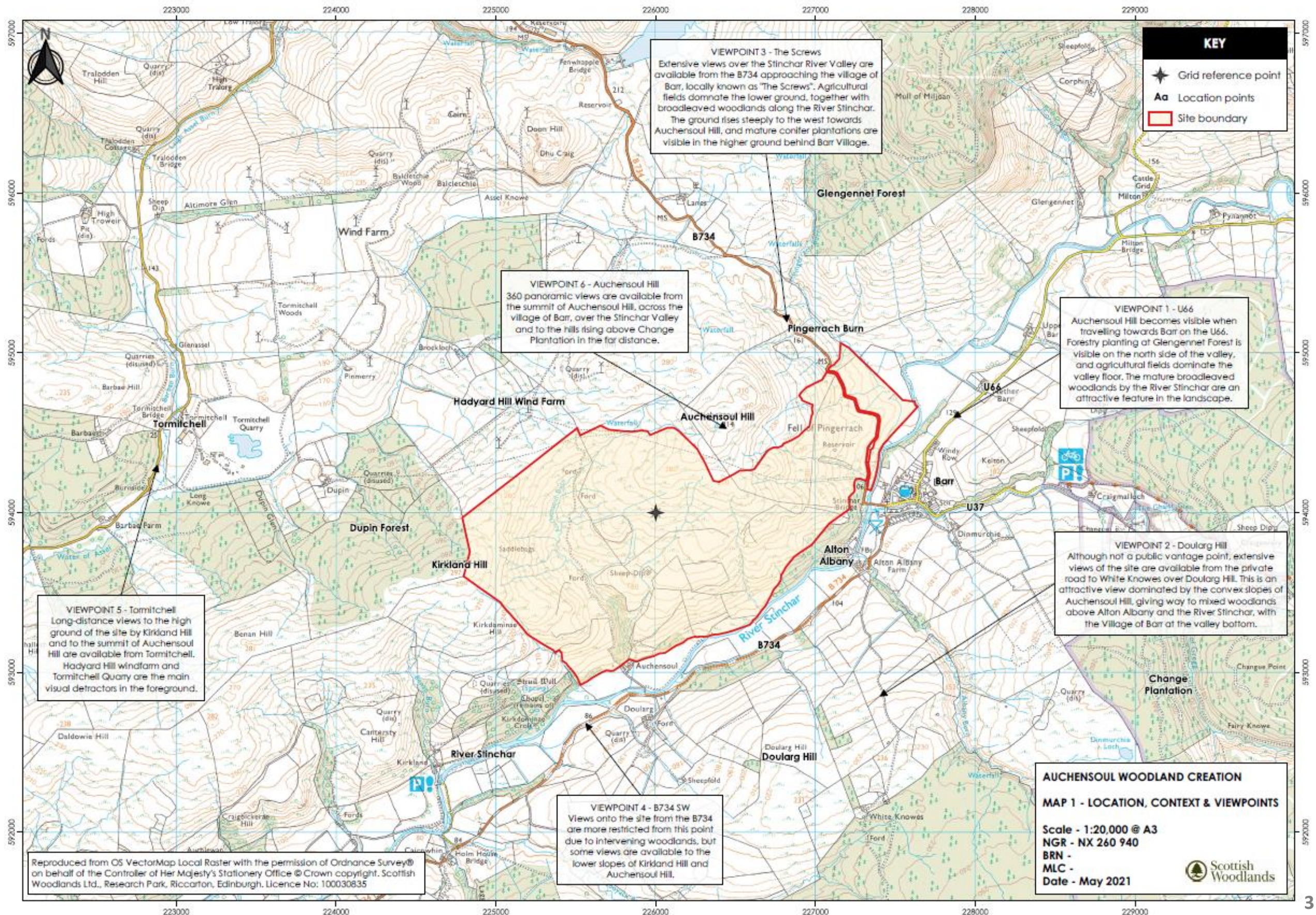
Views onto the site from the B734 are more restricted from this point due to intervening woodlands, but some views are available to the lower slopes of Kirkland Hill and Auchensoul Hill.

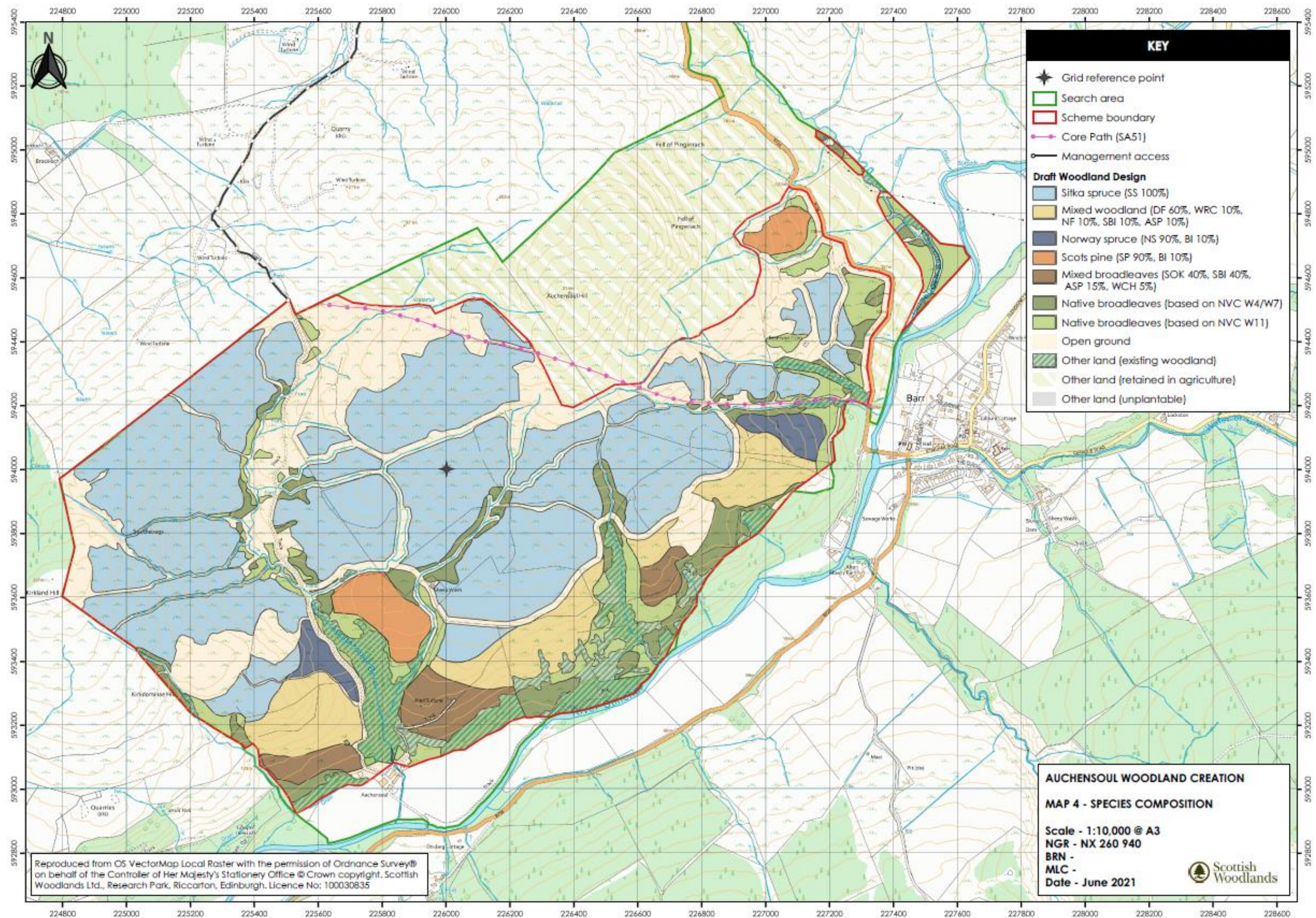
Viewpoint 5 – Tormitchell

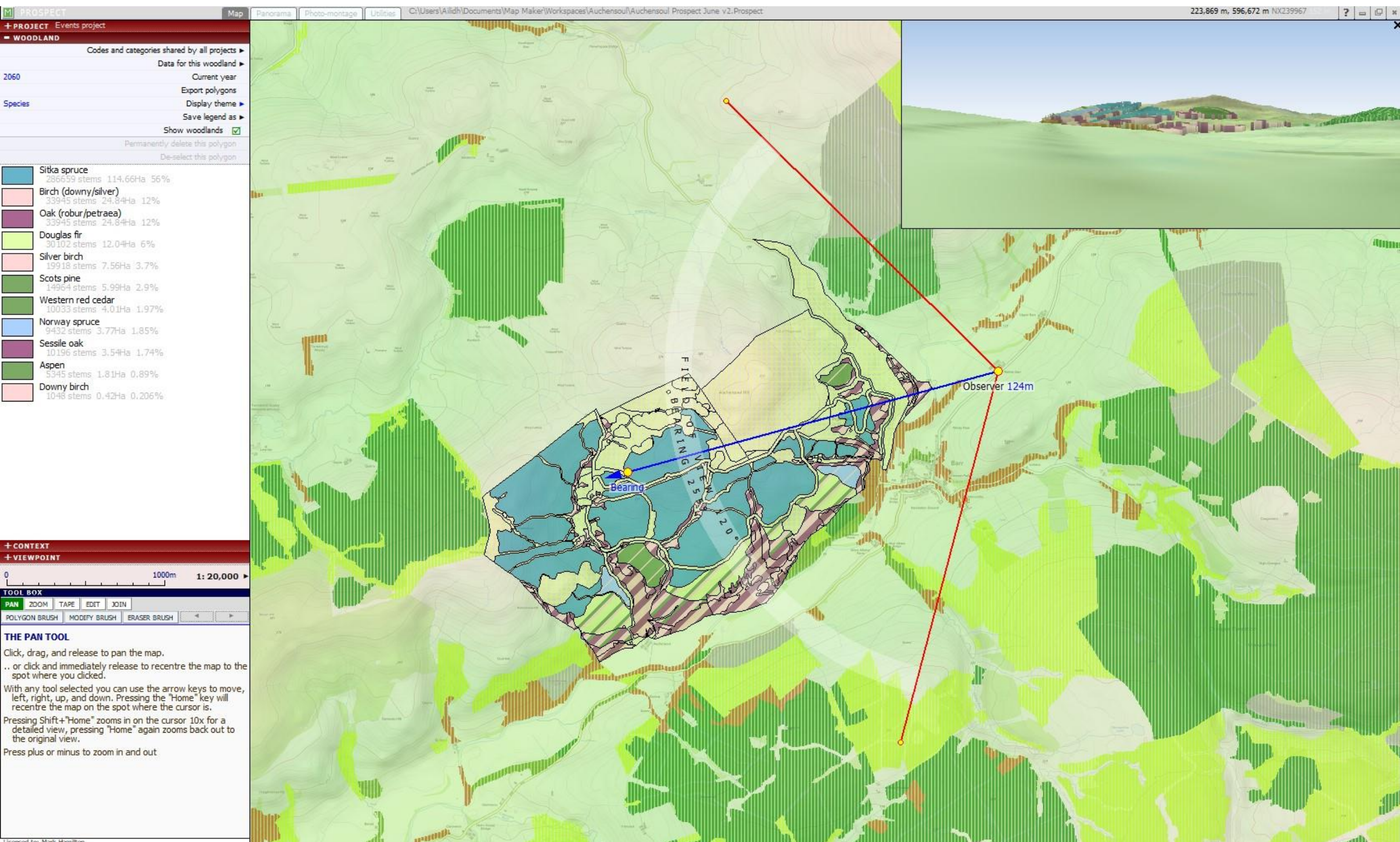
Long-distance views to the high ground of the site by Kirkland Hill and to the summit of Auchensoul Hill are available from Tormitchell. Hadyard Hill windfarm and Tormitchell Quarry are the main visual detractors in the foreground.

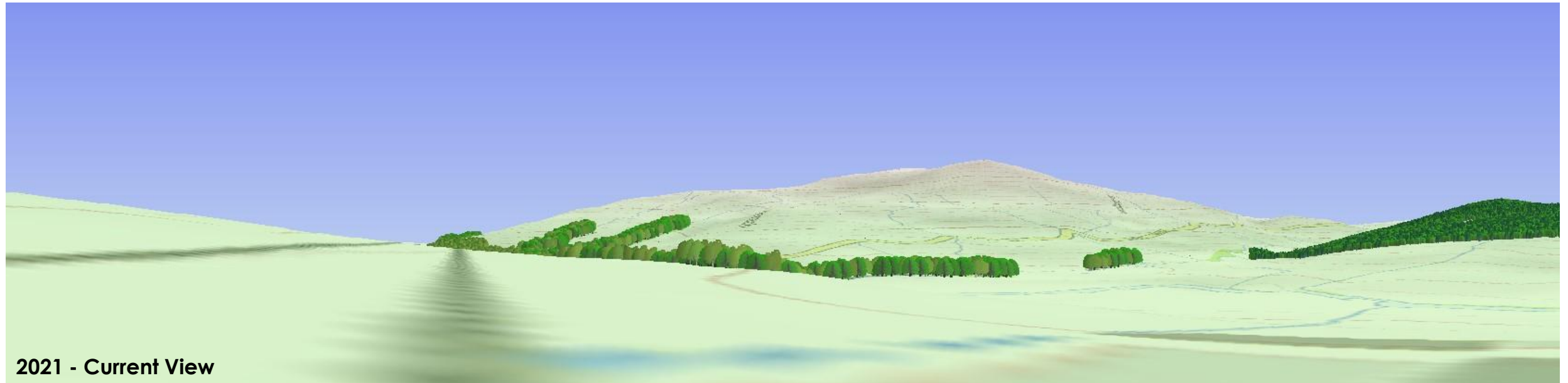
Viewpoint 6 – Auchensoul Hill

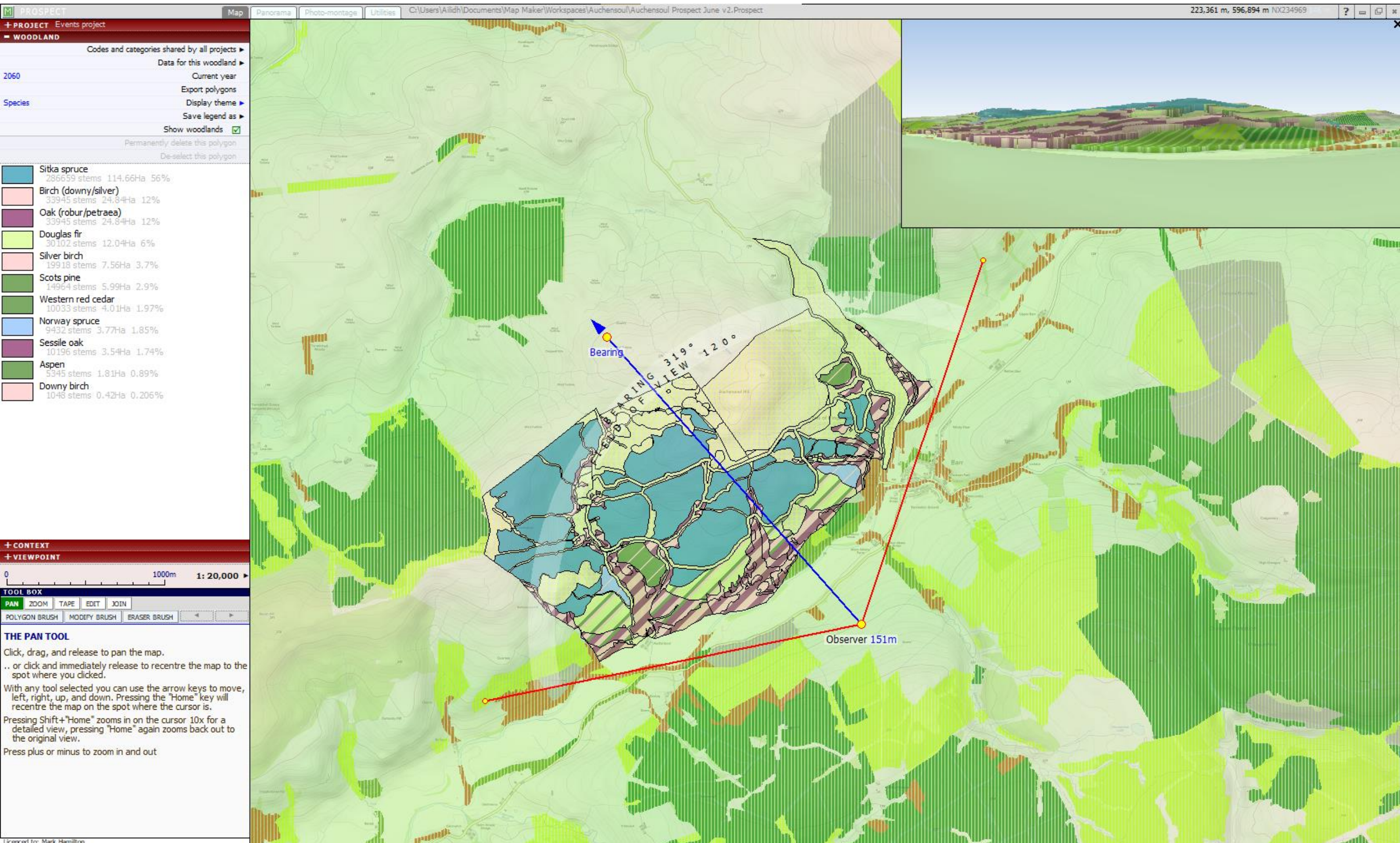
360° panoramic views are available from the summit of Auchensoul Hill, across the village of Barr, over the Stinchar Valley and to the hills rising above Change Plantation in the far distance.



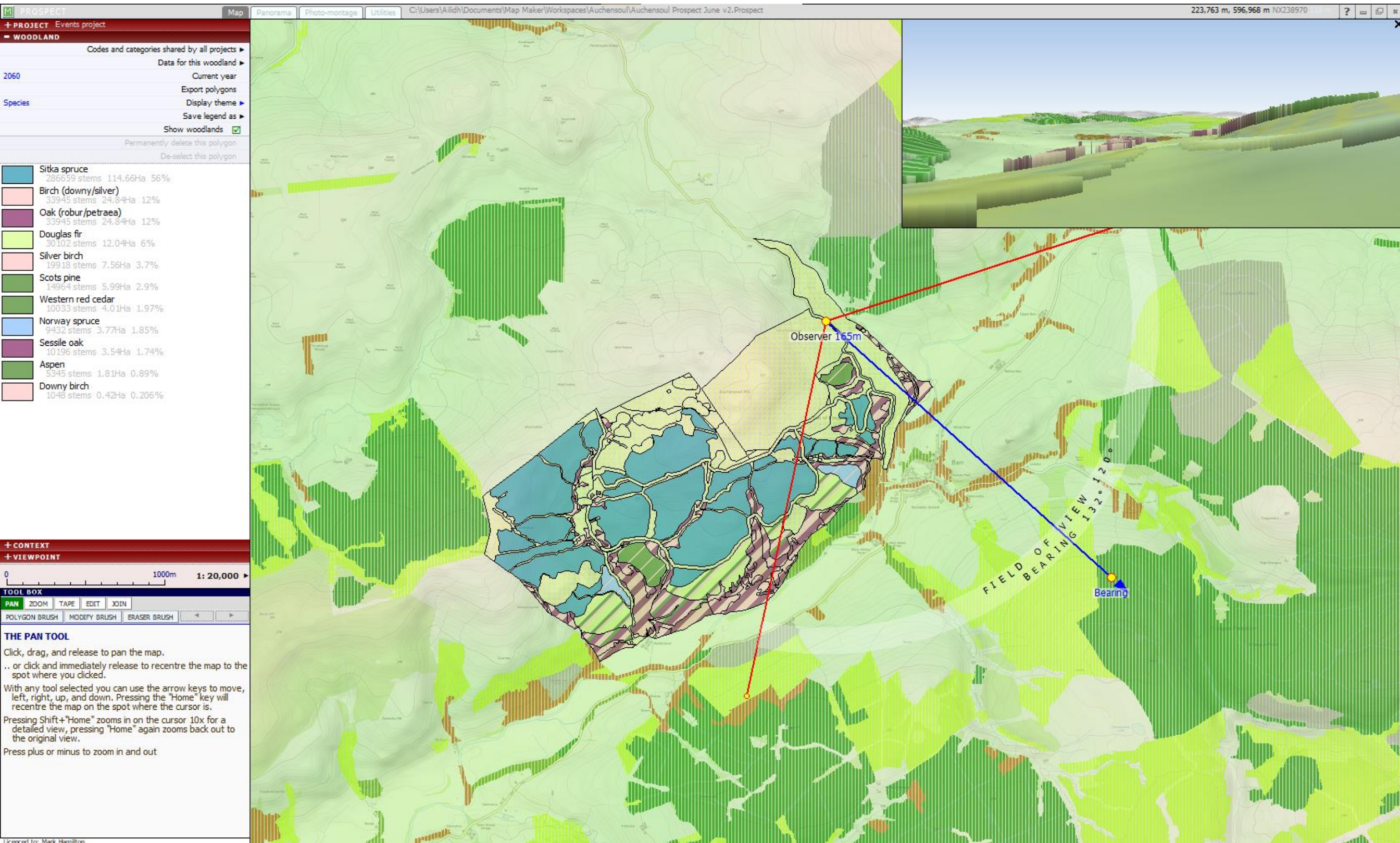


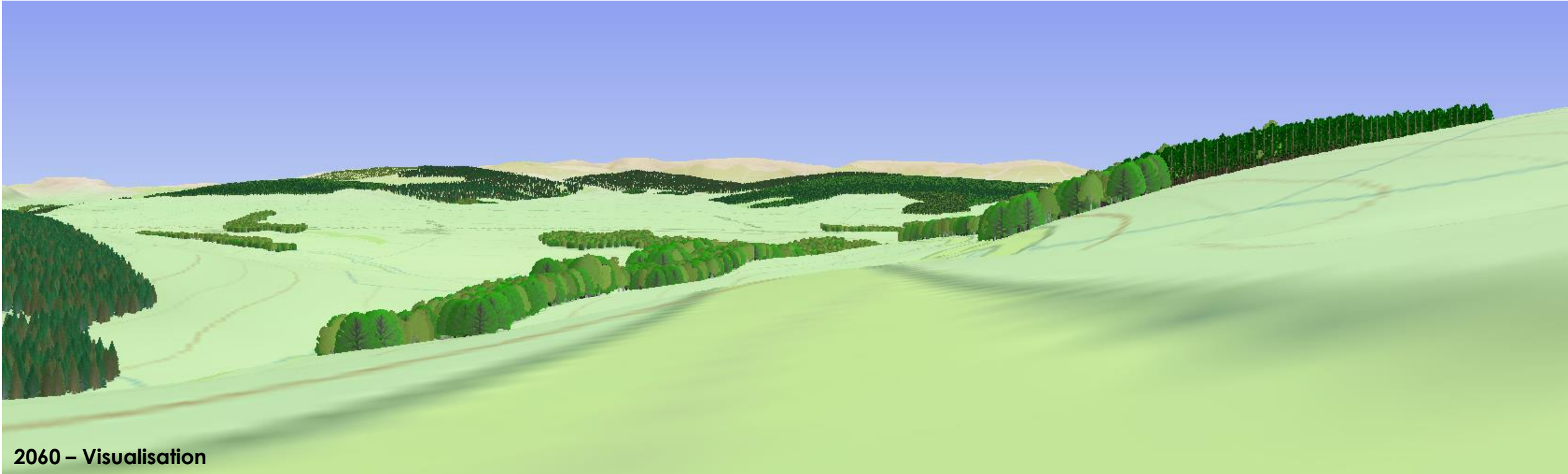
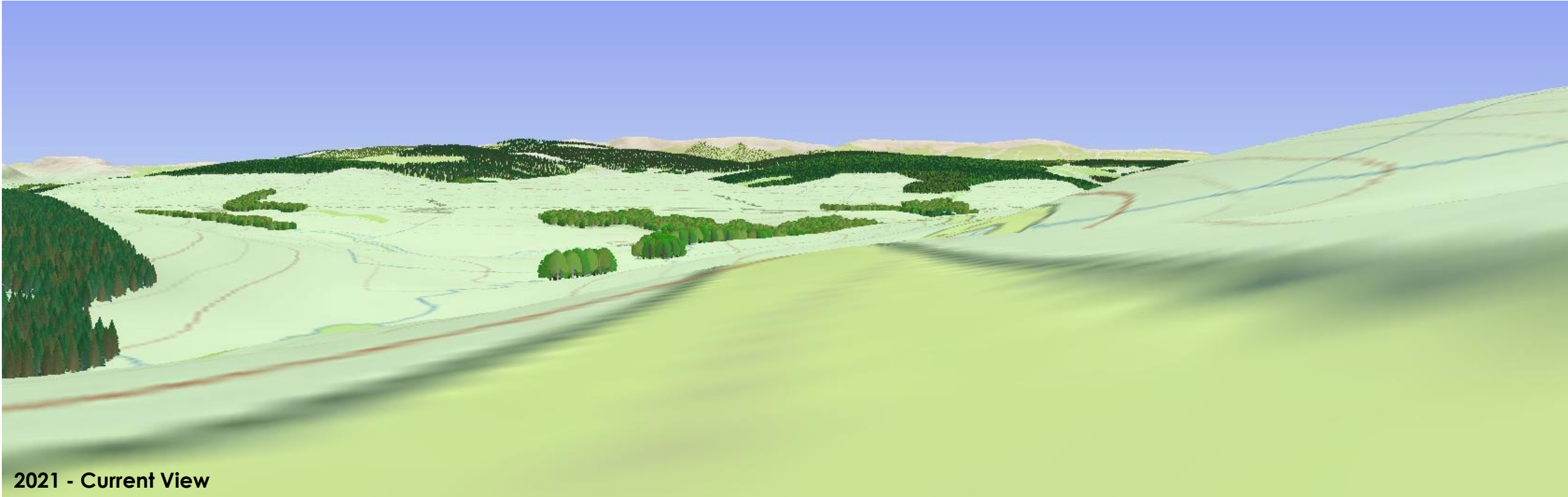


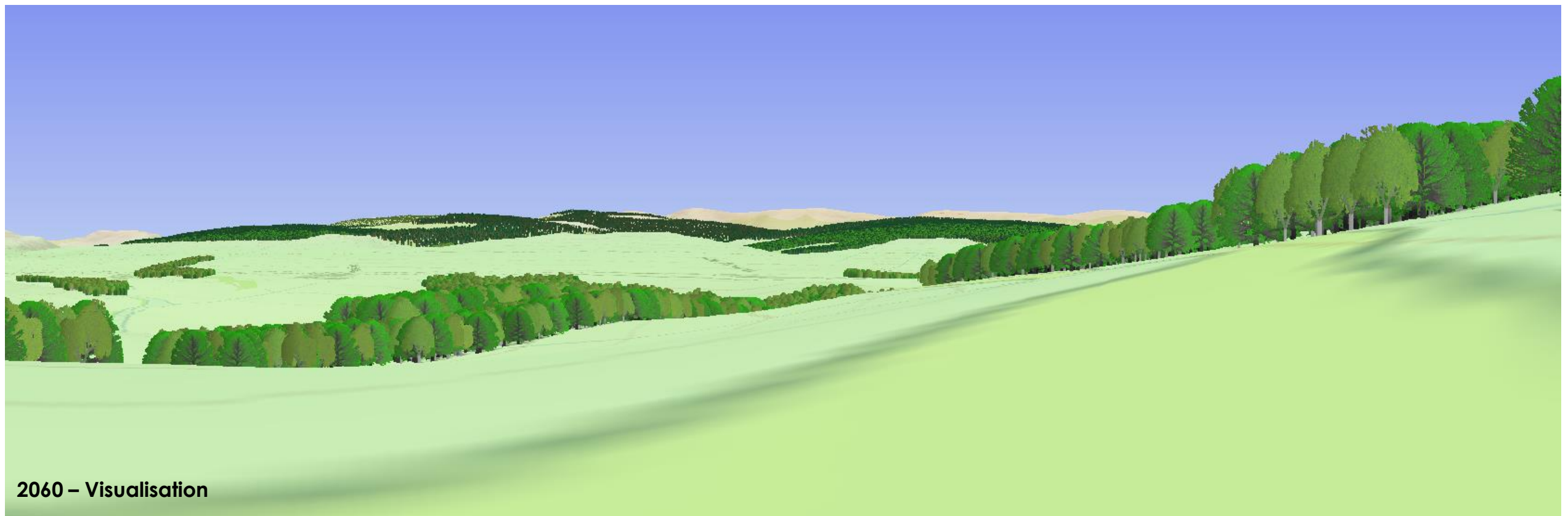
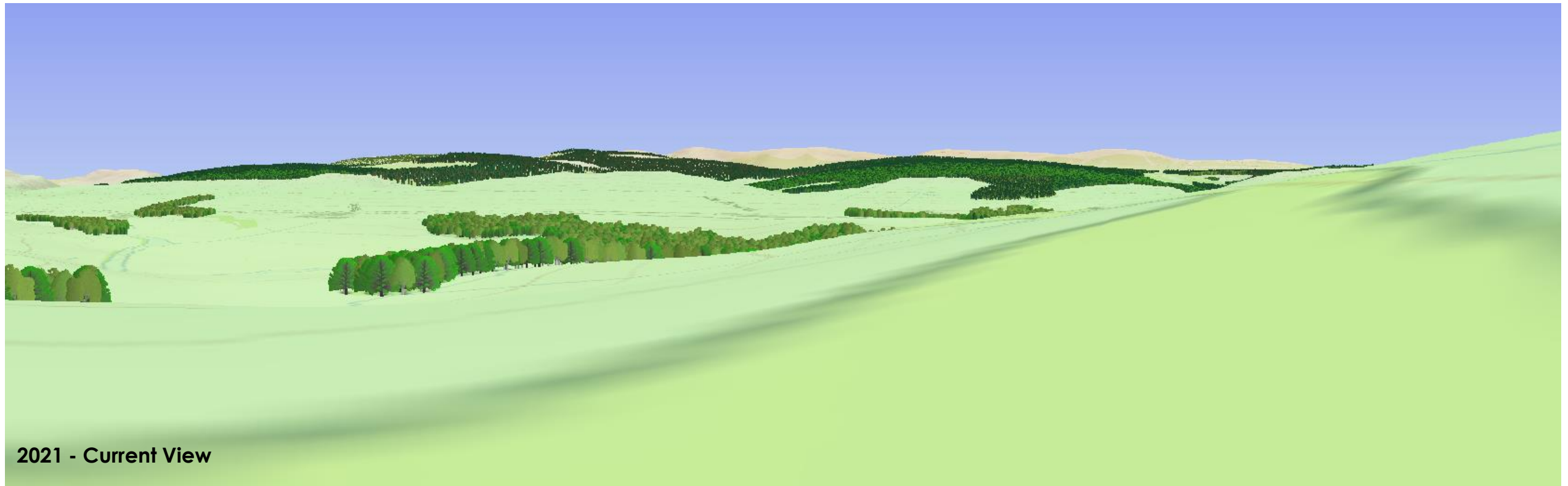


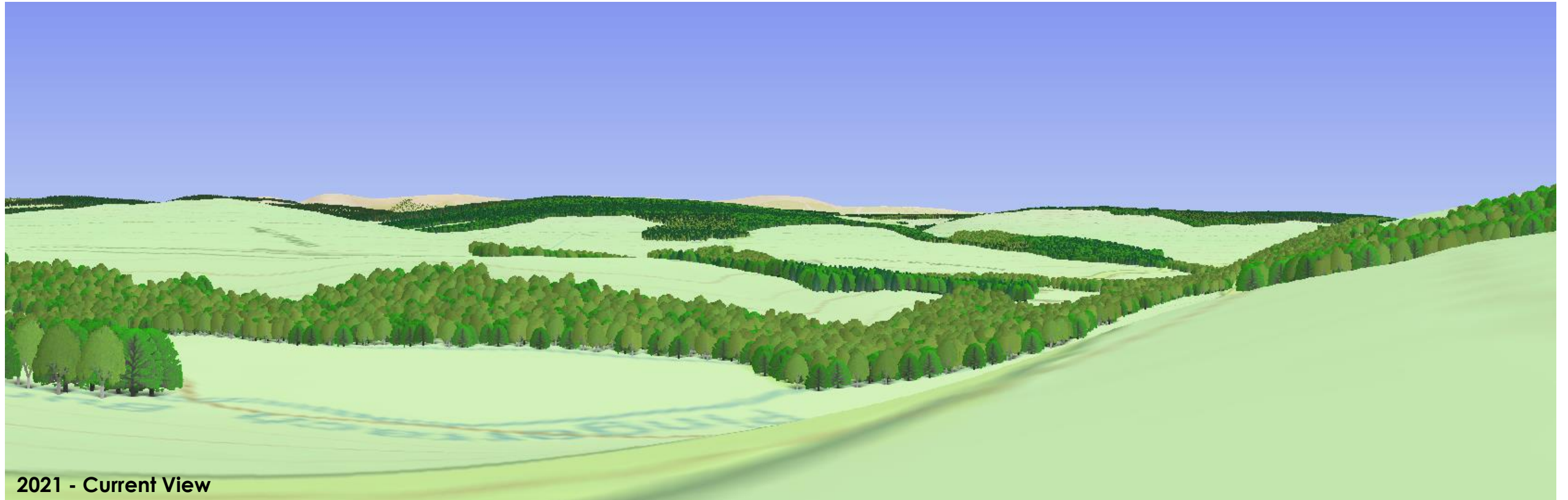








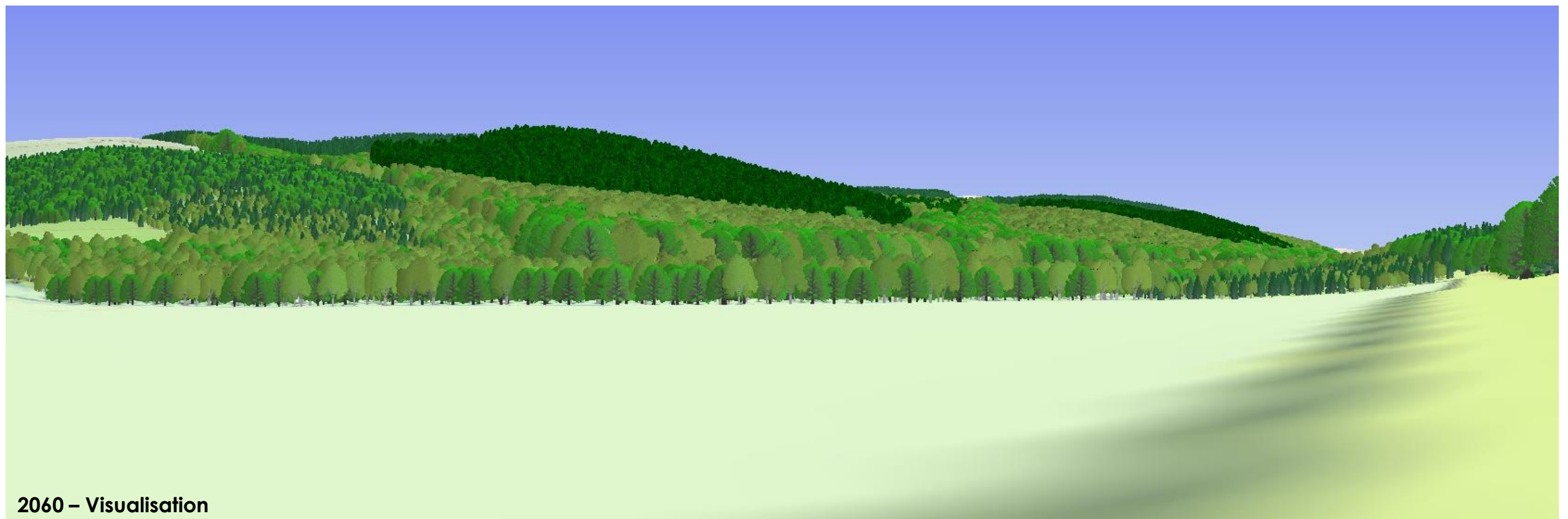




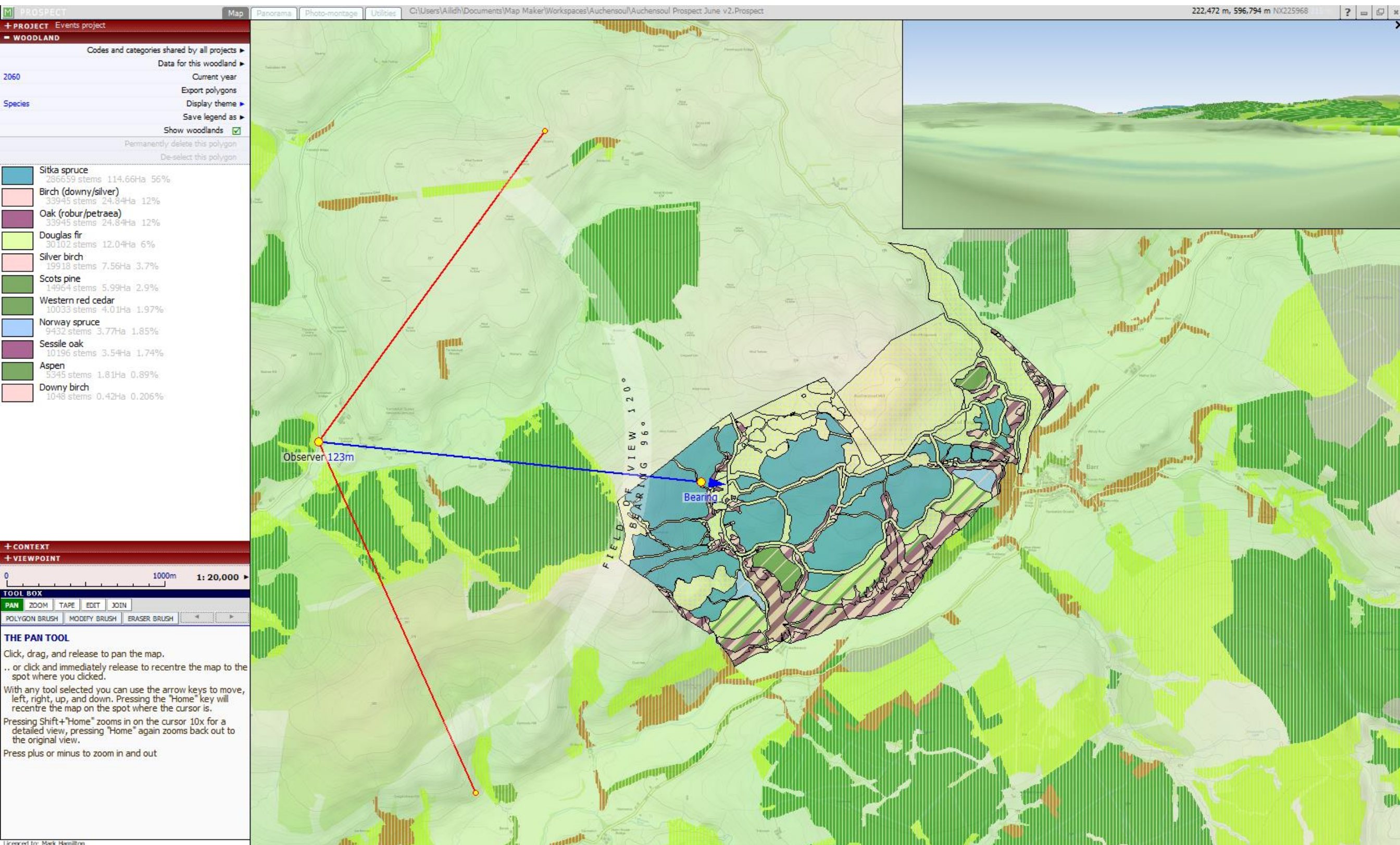


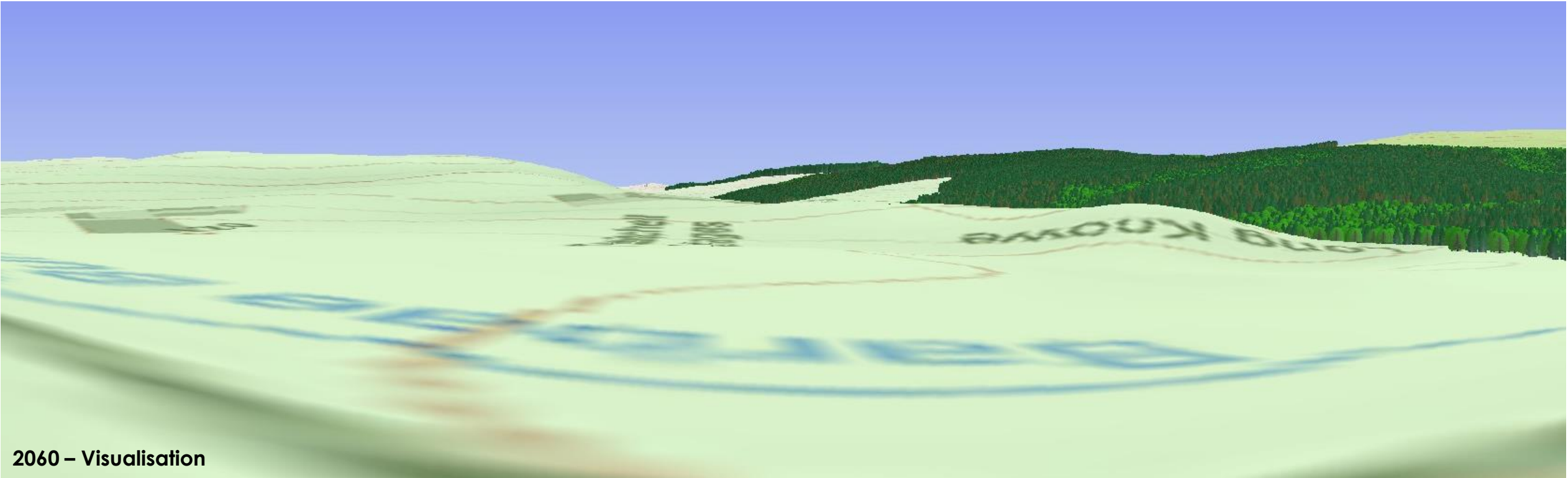
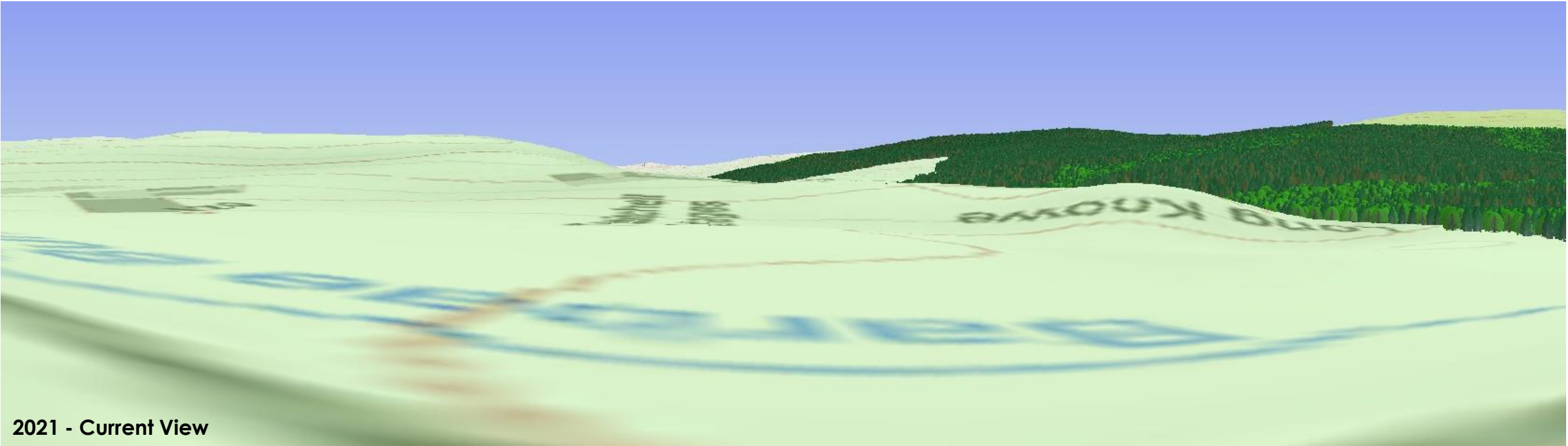


2021 - Current View



2060 – Visualisation









2021 - Current View



2060 – Visualisation