

Investment Services

www.scottishwoodlands.co.uk



The Investment Division of Scottish Woodlands has a personal approach to forestry investment advice, and our principal strength is our ability to tailor our services to the requirements of individual clients.



We realise that investment can be a very personal matter, often considering many other external factors, and we aim to respond to the needs of every individual or organisation.

With our extensive network of contacts throughout rural land businesses and professional advisors in the UK, we have an excellent knowledge of upcoming opportunities with existing forests or new planting land. Working closely with our Forest Management and Timber Harvesting teams across our network of

offices in Scotland and the wider UK we can react quickly to these opportunities and can assess and appraise individual assets, giving an insight into local and national influences. This approach provides our clients with confidence to invest in the asset class.

In addition to the acquisition of forestry land, we also provide a wide range of additional professional services aimed at the forest or estate owner. These are outlined below.



Investment and Acquisition Services

- Market Analysis and Review
- Site Assessment and Inspection
- Investment Appraisal
- Valuation
- Technical Reporting
- Purchase and Sale Due Diligence
- Portfolio Management



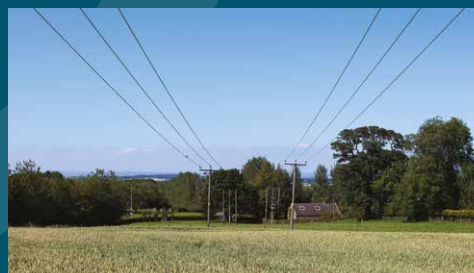
Valuation

- Valuations by RICS "Registered Valuer" of:
 - Forests
 - Farms
 - Estates
- Timber Valuation and Inventory



Estate and Land Management Services

- Property Management
- Holiday/Short Term Letting
- Business Planning
- Client Accounting and VAT Services
- Staff, Agricultural and Sporting Management



Professional Services

- Planning and Development
- Rural Business Consultancy
- Project Management
- Renewables
- Site Identification and Scoping
- Wayleave and Compensation Negotiations

Please contact us for further information:



Head Office:

Research Park, Riccarton,
Edinburgh EH14 4AP
T: 0131 451 5154
E: enquiries@scottishwoodlands.co.uk

Investment Services:

David Robertson
Head of Investment Division

T: 01738 625128
E: david.robertson@scottishwoodlands.co.uk

